

# FLORA PERSONA

By Mitch Chandran

Dedicated to Kim Chandran

2020

Flora Persona - Color

# Flora persona

Flora Persona is a photo-artwork series I worked, on and off, between 2017—2020. This series is dedicated to a subset of nature many of us don't notice in detail. The idea was to exaggerate the subjects and bring out a perspective so we can take notice of the intricate details they present to us. There is no one formula for creating these images. Each image has its own unique process used in post-processing to bring out its own photographic voice and visual personality.

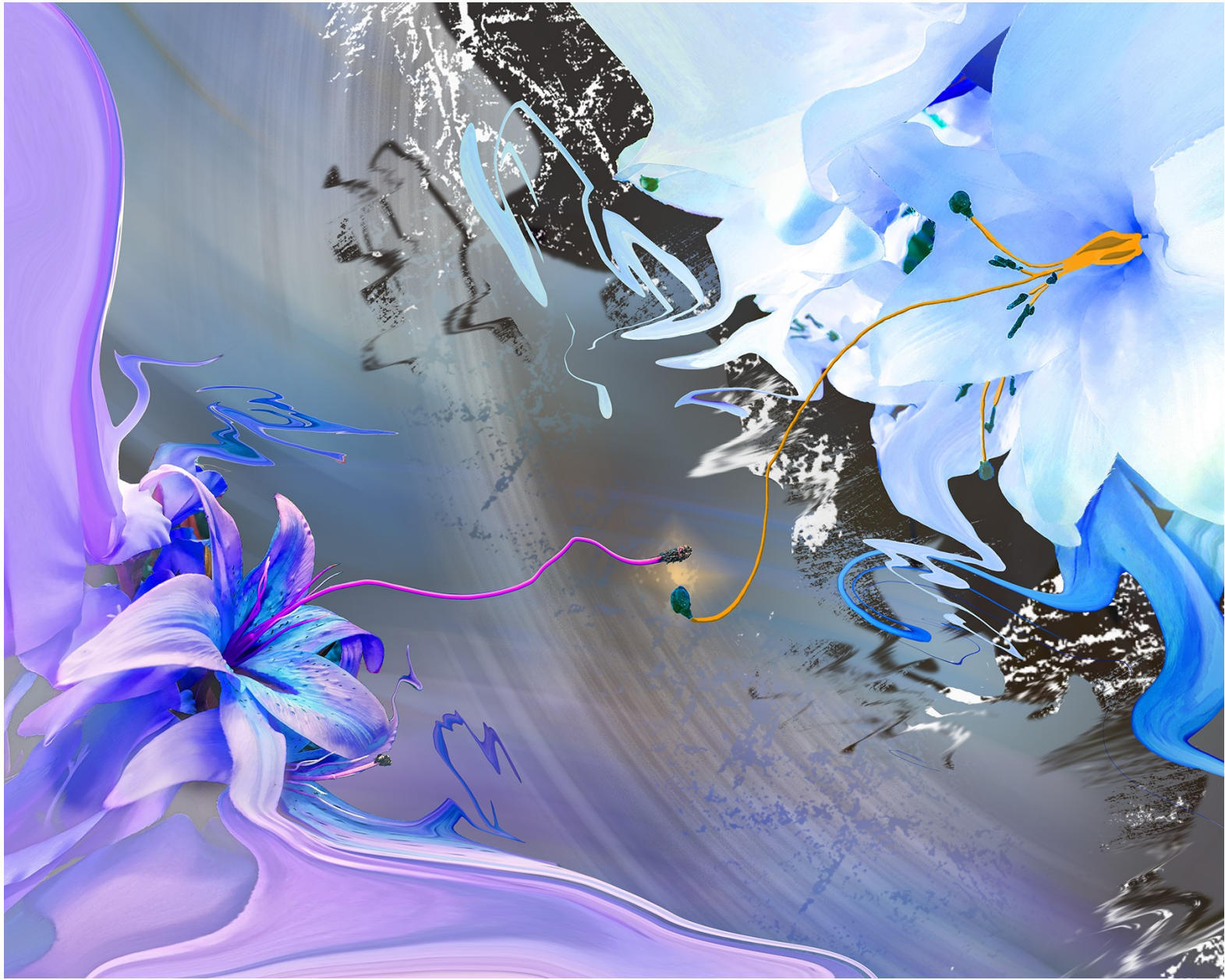
I'm a firm believer photography can go way past the objective perspective as long as it stays in the art realm. I believe today's tools are powerful enough that we can show hidden perspectives of scenes and mold them into images to announce details in a new and exciting way. I also believe if you have a passion for photography, are willing to explore new possibilities and not hold back on what seems to be out of the mainstream, then there are no limits on what you can do and create as a photographer.

The most important thing is if photography brings you pleasure, then that will inherently come across in the images you present. Not everyone will appreciate what you do, but if one image you present evokes one reaction from one viewer, then consider yourself a successful photographer.



MITCH CHANDRAN  
PHOTOGRAPHER





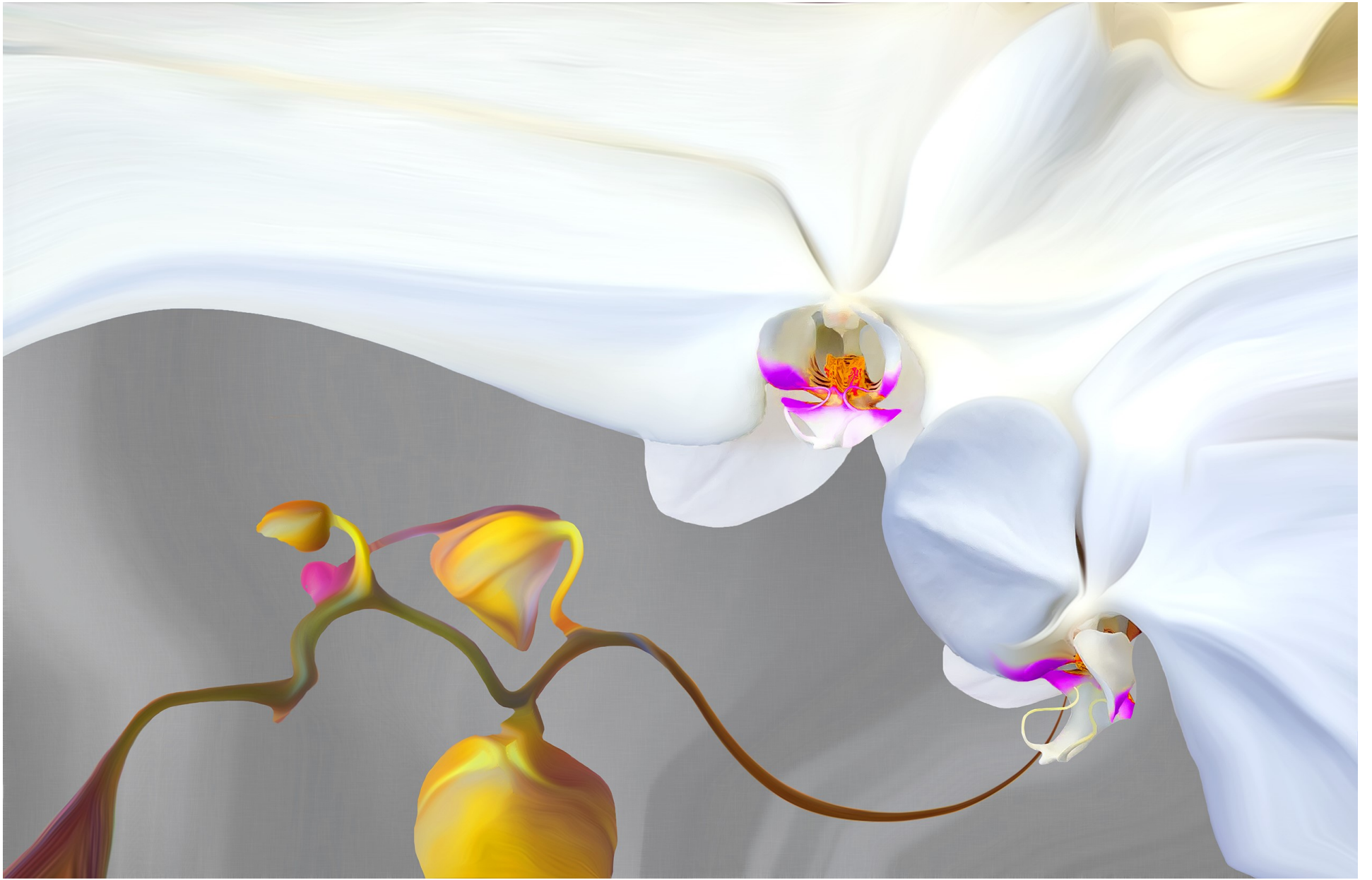


Golden Slumber, 2017 (16x20)









Orchid of Olias, 2018 (11x17)





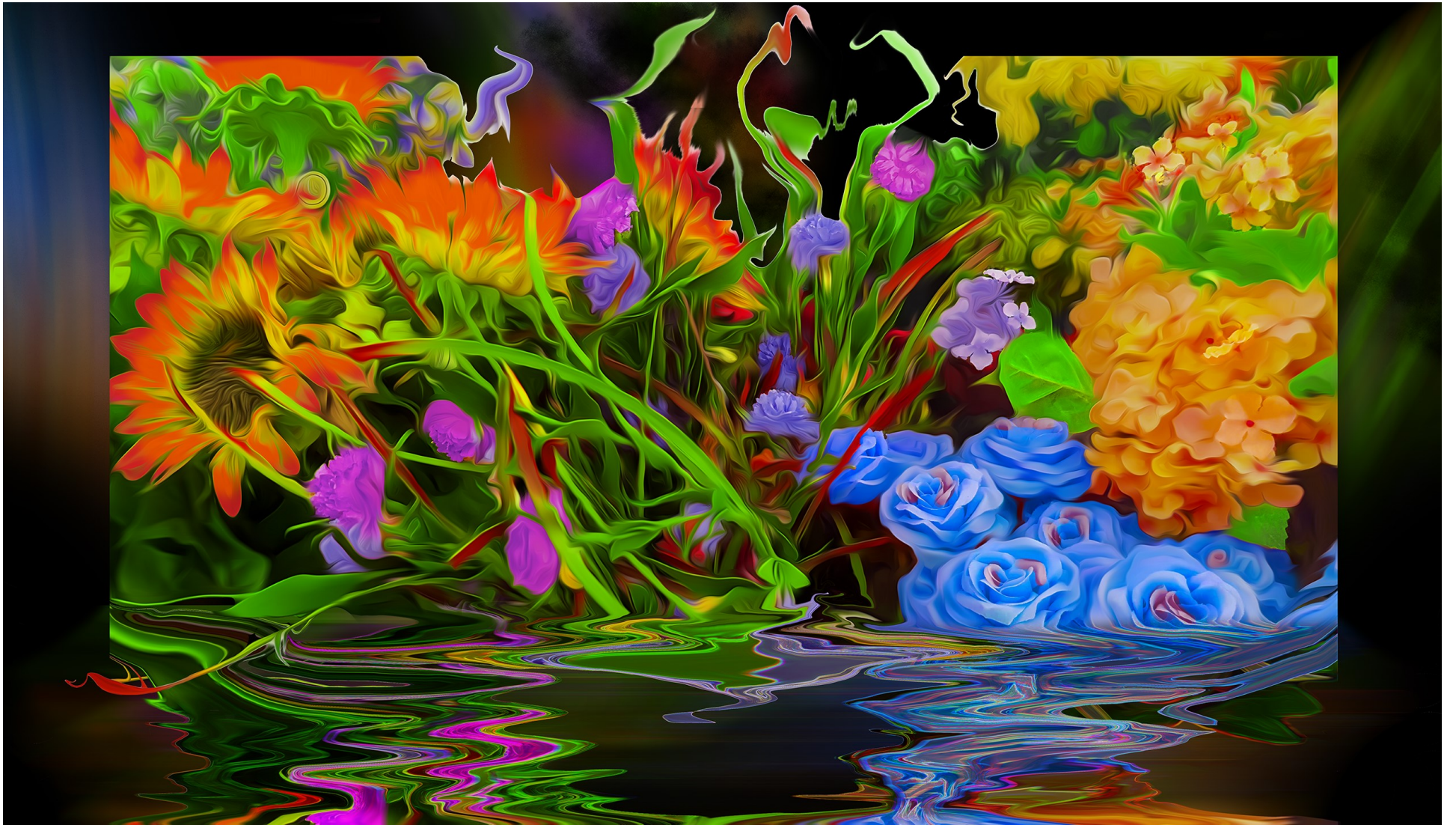
The Final Cut, 2019 (16x20)





Don't Wait Too Long, 2018 (16x20)





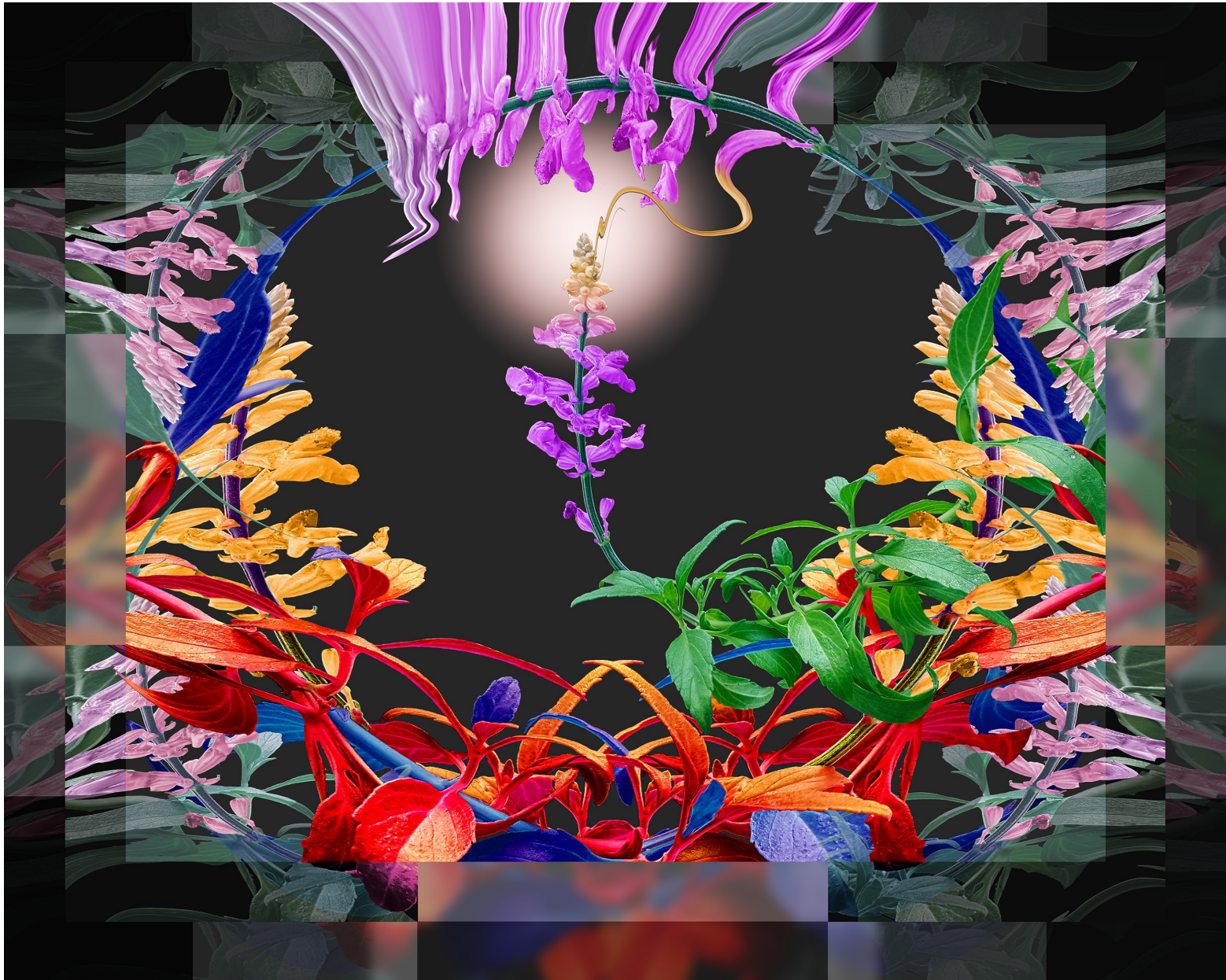
Suns and Roses, 2019 (16x28)





Rise, 2019 (20x40)





Once Upon a Time, 2019 (16x20)



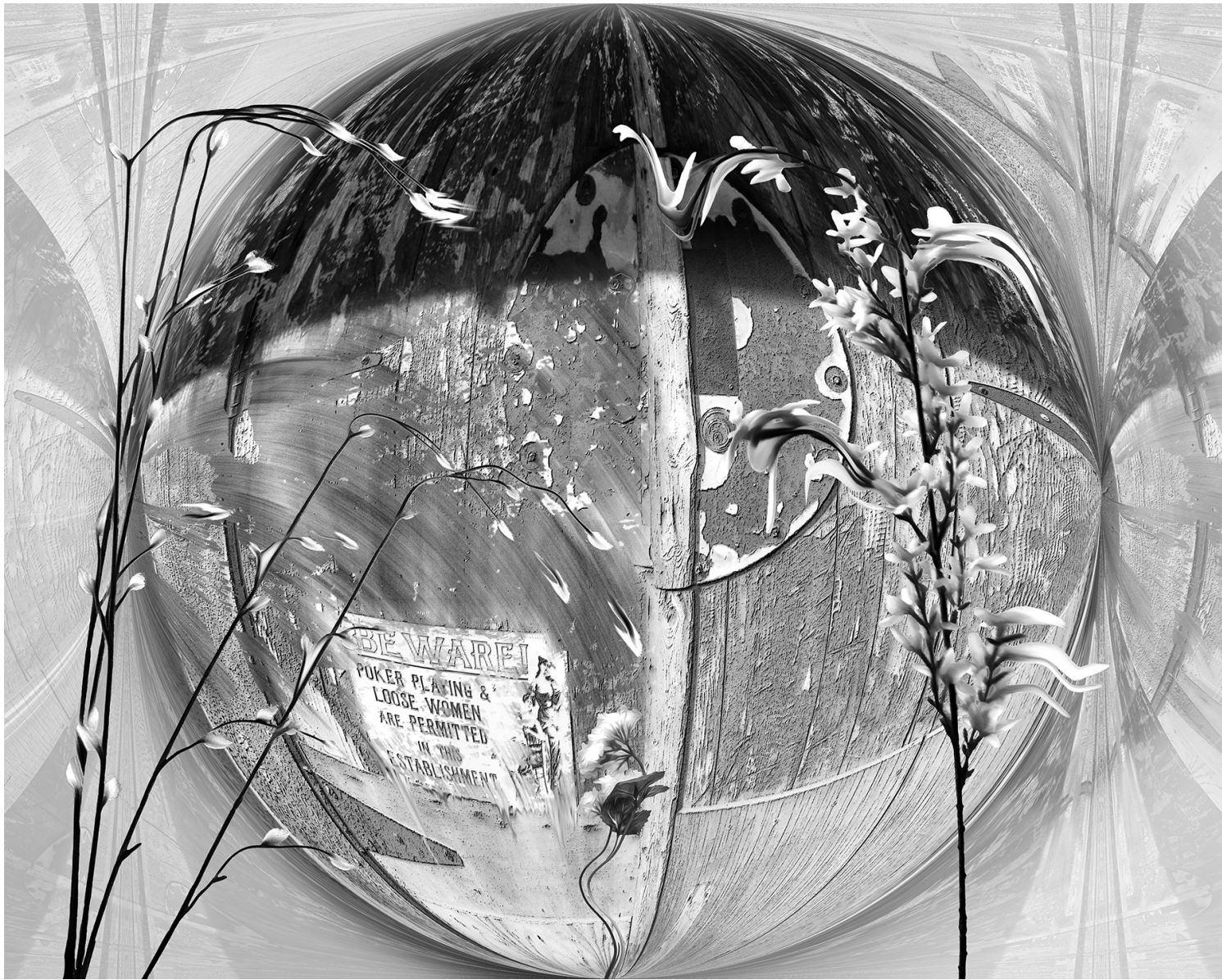
## Flora Persona - Monochrome



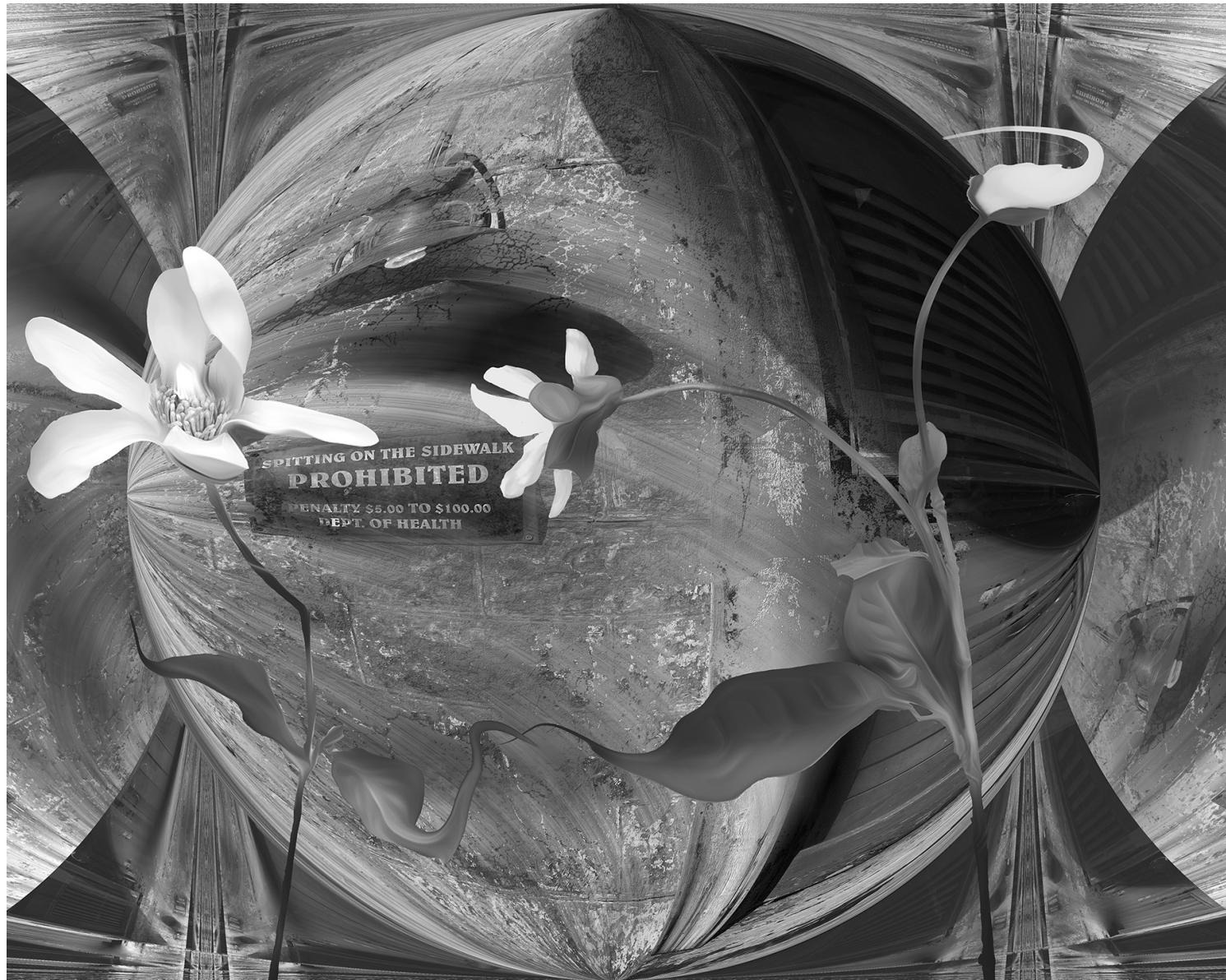


Blue Rose, 2019 (16x20)





Beware of Loose Women, 2019 (16x20)





Blow by Blow, 2018 (16x20)





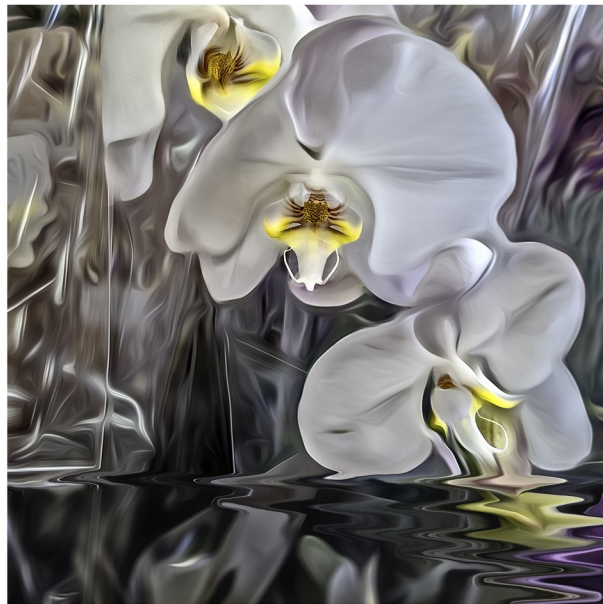
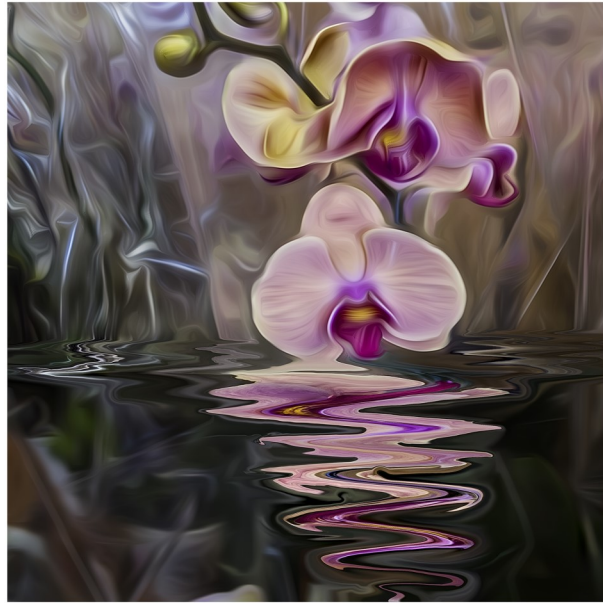
The Tree, 2020 (16x20)





In The Wee Small Hours of the Morning, 2019 (16x20)





Orchid Dreams, 4-Pack, 2017 (30x30; 13.5" Elements)

