



The
Digital Artwork
& **Artistry** of MC

MC's (Mitch Chandran) photography and artistic images isn't just about capturing a moment; it's about eavesdropping on a conversation between light and the natural world. If you look at his body of work, you'll notice he doesn't just "take" pictures—he waits for them to reveal themselves.

The Philosophy of the Lens

For MC, the camera acts as a bridge between the chaotic pace of modern life and the stillness of the environment. His style is often characterized by:

- **Cinematic Scale:** He has a knack for making a single tree or a desolate coastline look like a scene from an epic film.
- **The "Quiet" Moment:** While many photographers chase high-octane action, Mitch thrives in the preamble or the aftermath—the fog rolling in or the last sliver of golden hour.
- **Narrative Texture:** You can almost feel the grit of the sand or the dampness of the mountain air in his frames.



Technical Artistry Meets Instinct

MC bridges the gap between technical perfection and raw emotion. He uses light as a sculptor uses clay, often favoring high-contrast environments where shadows tell as much of the story as the highlights. His post-processing isn't about "fixing" a photo, but rather enhancing the mood that was already present when he pressed the shutter.

"Photography is less about the gear and more about the patience to wait for the world to stop posing and start being." — This sentiment echoes through every gallery he produces.

MC continues to remind his audience that the world is a gallery in constant flux. His work serves as a permanent record of the fleeting, a way to bottle the wind and the sun for a few seconds of reflection.

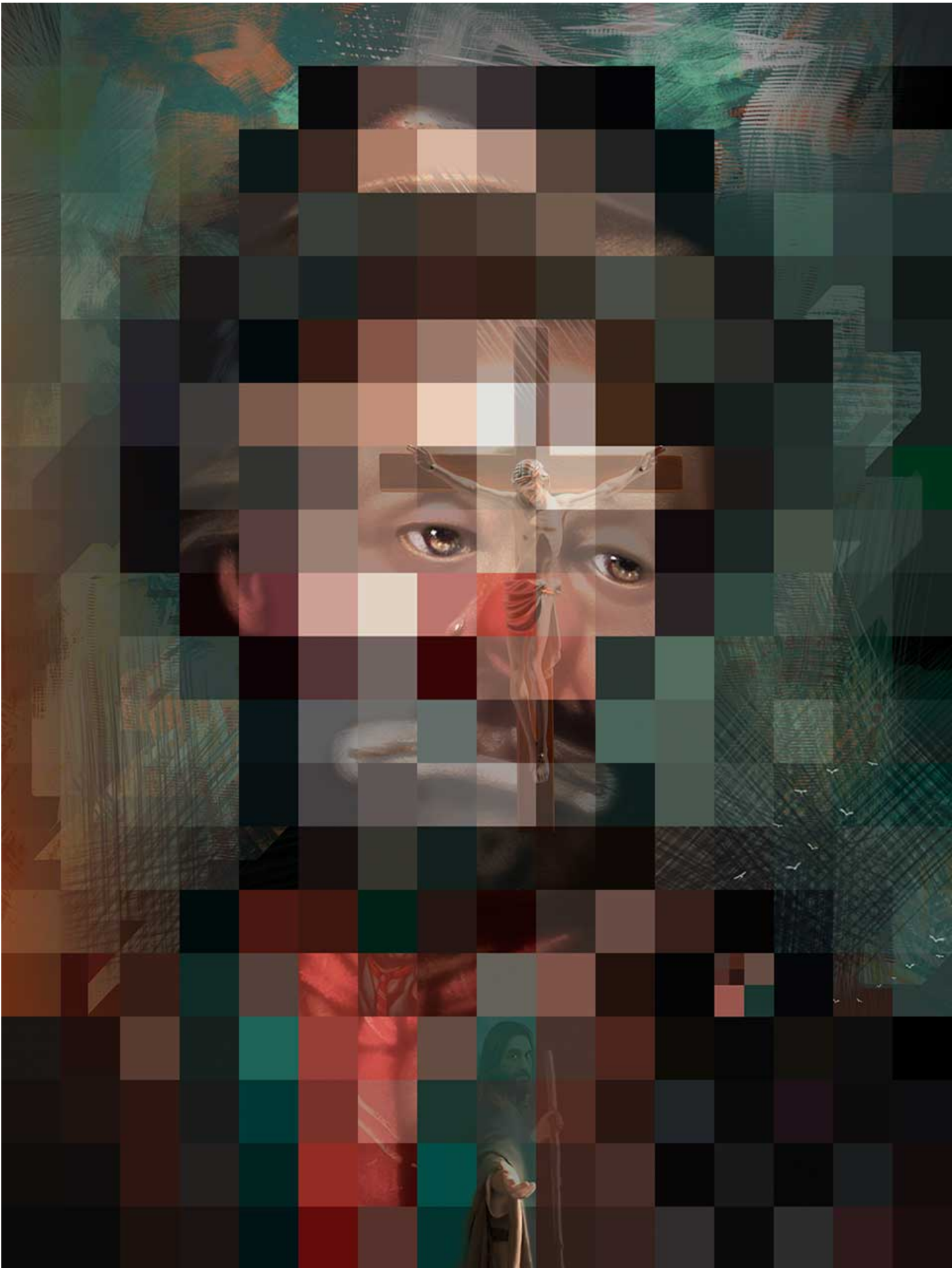
MC's art images are less about documenting reality and more about translating it into a visual language of emotion. While a traditional photographer might focus on the "what," he focuses on the "**how it feels.**" His work sits at the intersection of fine art and environmental storytelling, creating a narrative that feels both ancient and hyper-modern.

Ultimately, MC's art images serve as a visual sanctuary. They don't just capture a location; they capture a state of mind—one that values stillness over noise and depth over surface-level beauty.

All photos and art images are accomplished leveraging Photoshop (CS6).

TABLE OF CONTENTS

Latest Artwork	Page 1
Illustrations (Pre-2020)	Page 28
Monochrome Photo Art	Page 48
About Photoshop	Page 65



AGAPE

The image *Agape (2023)* by MC was done in 2021 and is a striking digital composition that explores the intersection of divinity, humanity, and the fragmented nature of modern faith. The title itself, referencing the highest form of unconditional, selfless love, provides the lens through which we must view this layered portrait.

Fragmented Divine

The piece centers on a large, soulful face that appears to be emerging from—or perhaps dissolving into—a digital grid. This “pixelated veil” serves as a powerful metaphor for the “noise” of the contemporary world. We see the subject's eyes clearly: they are filled with a heavy, empathetic sorrow, staring directly at the viewer as if to bridge the gap between the digital and the eternal.

At the very heart of the composition, superimposed over the bridge of the nose, is the **Crucifixion**. This placement is intentional; the ultimate act of *agape* love is literally the “vision” through which Jesus Christ sees the world. It suggests that suffering and sacrifice are not peripheral to this identity but are its defining core.

Lower in the frame, a smaller, more traditional depiction of Jesus appears with an outstretched hand. This figure is unpixelated, suggesting a tangible invitation amidst the abstraction. The juxtaposition of the giant, fragmented face with the small, clear figure of the Shepherd creates a sense of scale—the vastness of the one, true God compared to the intimacy of our personal savior. The brushstrokes surrounding the head are chaotic and

The “Digital Veil” vs. Modern Realism

Most modern digital religious art (think of artists like **Akiane Kramarik** or the cinematic “Resurrection” styles common on social media, strives for hyper-realism to make the divine feel “tactile” and “present.”

Agape’s Contrast: MC does the opposite. By using pixelation, the artist introduces a “digital veil.” It suggests that in the 21st century, our view of the divine is often mediated through screens, data, and “noise.” Instead of bringing the figure closer through clarity, the pixels remind us of the **transcendence and “otherness”** of God—He is a figure that we can see, but not fully resolve.

Fragmentation vs. Minimalist Iconography: A major trend in 2024–2026 digital religious art is **Minimalist Iconography** (e.g., the work of **Richard Escalona**), which uses clean lines and solid colors to simplify complex truths.

Agape’s Contrast: **Rather than simplifying, MC’s pixelated style fragments.** This aligns more closely with “Glitch Art” movements. It reflects a “post-modern faith” where the believer’s experience isn’t a solid, unbroken line, but a series of gathered fragments. It acknowledges that modern life is often disjointed, yet asserts that the “Agape” (the face) still holds the structure together.

Procedural “Noise” as Spiritual Mystery: In traditional icons, gold leaf represented the uncreated light of Heaven. In digital art, this is often replaced by literal “glow” effects or lens flares.

THE SINGING MINSTREL

This digital masterpiece, *The Singing Minstrel* (2023), is a striking exploration of Synthetic Cubism, where MC deconstructs the traditional figure of a traveling musician into a rhythmic dance of geometric planes and muted textures. The narrative of the piece suggests a timeless moment of performance, where the boundary between the musician and their music begins to blur.

The Song in the Glass

In *The Singing Minstrel*, the subject is not merely a person holding an instrument, but a person becoming the instrument. The central figure is fractured into faceted shards of grey and silver, suggesting a minstrel lost in the mechanical, repetitive motion of a folk ballad.

MC places the minstrel before what appears to be a window, yet the view outside—a stylized steeple or tower topped with a cross—feels as much like a memory as a physical landscape. The cross creates a secondary focal point, perhaps suggesting the spiritual or historical roots of the minstrel's song. The minstrel's face is reduced to a profile of sharp angles, eyes focused inward, capturing the solitude of a performer whose only true audience is the air they fill with sound.

MC utilizes a sophisticated digital "grunge" texture throughout the composition. The mottled, weathered appearance of the green and brown sections gives the artwork an aged, tactile feel, as if the image were a fresco painted on a crumbling wall or a lithograph pulled from an old printing press. This juxtaposition of modern digital sharp edges with ancient-looking textures reinforces the "Minstrel" theme—a medieval concept rendered through a 21st-century lens.

To understand how MC utilizes geometric shapes in *The Singing Minstrel*, we have to look at the evolution of Cubism—specifically the transition from Analytical to Synthetic Cubism.

In *The Singing Minstrel*, the color palette serves as the emotional engine of the piece. It doesn't just decorate the geometry; it creates a sophisticated dialogue between **industrial grit** and **spiritual luminosity**. The artist demonstrates a keen understanding of how to use limited "pops" of color to guide the viewer's eye through a complex, cubist landscape.

1. The Power of the Neutral Base

The foundation of this work is built on a sophisticated range of **slate grays, charcoal, and muted teals**.

- **The Review:** This was a brilliant choice. By keeping the central figure and much of the background in a desaturated state, the artist creates a "quiet" environment. This allows the viewer to focus on the sharp, angular transitions of the composition without being overwhelmed. The use of **gradient grays** gives the flat, geometric shapes a metallic, almost iridescent quality that feels both modern and timeless.

2. The Spiritual Purple & Gold

The focal point of the piece—the window and the steeple—is where the color narrative truly shines.

Continued on page 6



- **The Review:** The introduction of **lavender and periwinkle** in the window panes is an inspired departure from the surrounding "bruised" greens and browns. It provides a much-needed breath of fresh air.
- **The Contrast:** Pairing this soft purple with the **honey-ochre** of the steeple creates a complementary tension that feels sacred. It lifts the "Minstrel" out of a purely mechanical world and into one of high art and tradition.

3. The "Sonic" Yellows

At the base of the composition, we see a sudden, aggressive flare of **amber and bright yellow**.

- **The Review:** This is the most daring use of color in the piece. It functions as a visual representation of sound. Without this splash of warmth at the bottom, the image might have felt too cold or clinical. Instead, the yellow acts as a "grounding heat," suggesting that the music being played is vibrant, loud, and alive.

Enduring Reflection

In *Enduring Reflection* (2024), we find ourselves in a space that feels less like a room and more like a threshold between two states of being. The narrative is one of quietude, the passage of time, and the weight of internal life.

The Observer and the Abyss

The central figure, a woman, stands in deep silhouette, a shadow cast against the brilliance of the outside world. She is a woman caught in a moment of contemplative stillness. Her hand is raised to her chin—a universal gesture of pondering—suggesting that while her body is stationary, her mind is traveling far beyond the confines of the room. She wears a dark suit, perhaps a symbol of formal life, responsibility, or the "armor" one wears in the professional world, now softened by the solitude of this view.

The Window: A Breach in the Barrier

The aperture through which she looks is not a finished window, but a jagged, raw opening in a dark, weathered wall. The cracks snaking away from the corners suggest a **breaking point**. This isn't just a view; it's a breakthrough.

- **The Interior:** Dark, textured, and perhaps a bit claustrophobic. It represents the known, the past, and the heavy architecture of the mind.
- **The Exterior:** A limitless expanse of blue and mist. It represents the unknown, the future, or the spiritual.

Symbols of the Journey

Two key elements anchor the composition and provide a roadmap for its meaning:

1. **The Open Book:** Resting on the ledge, the book is illuminated by the light from outside. It represents accumulated wisdom or perhaps a life story half-written. It is left open, implying that the answers are no longer on the page, but out there in the world.
2. **The Lone Sailboat:** Drifting on the hazy water, the boat serves as a mirror to the man. It is solitary, navigating a vast and foggy horizon. It symbolizes the human soul on its individual journey—fragile yet persistent, moving toward a destination that is not yet visible.

The Narrative Arc

This image tells the story of a transitional moment. The woman has spent a lifetime (represented by the suit and the book) building and learning within the walls of her own experience. Now, she stands at the precipice of a new understanding.

The title, *Enduring Reflection*, suggests that this is not a fleeting thought, but a lifelong practice. To "endure" reflection is to face the truth of one's own existence without turning away. She gazes at the water, which represents the flow of time, acknowledging both where she has been and the vast, misty "somewhere" she has yet to go.

It is a portrait of the "Inner Architect"—the moment when we stop doing and simply begin *being*.

The image utilizes a high-contrast palette that separates the heavy, earth-toned interior—representing the weight of the past—from the ethereal, misty blues of the horizon that symbolize the infinite. The deep shadows of the silhouette create a somber, introspective void, drawing the viewer's eye toward the light as a source of clarity. Finally, the strategic use of warm amber accents on the open book and watch serves as a vital spark of wisdom, bridging the gap between the finite human experience and the vast unknown.





FANFARE FOR THE CUSTODIAN

In the quiet, echoing hallways of a world that only wakes up when everyone else has gone home, *Fanfare for the Custodian* (2024) exists as a shadow among shadows. The narrative of this image is one of profound irony and quiet dignity—a visual "fanfare" for the invisible labor that keeps the wheels of high society turning.

The Narrative of Two Worlds

The image is a clever study of perspective, split between the raw reality and the curated spectacle.

- **The Reality (Left side of the image):** In the dim, cavernous reach of a corporate or gallery lobby, we see the custodian in his natural element. He is hunched over, working a cloth against a window, his yellow mop bucket a lonely sentinel by his side. There is no audience here. The hum from the fluorescent lights and the rhythmic scrub of fabric are his only companions. He is the ghost in the machine, ensuring that by morning, not a single smudge remains to distract from the prestige of the institution.
- **The Spectacle (Right side of the image):** On the other side of a literal and metaphorical wall, the same moment is captured in a heavy, ornate gold frame. Here, the custodian's labor is transformed into "Art." A woman in an elegant, low-backed dress stands in the darkness, captivated by the image of the man cleaning.

The title, *Fanfare for the Custodian*, suggests a celebration, yet the fanfare is silent. The "appreciation" for **the** custodian only occurs once he is safely contained within a frame, turned into a subject for the elite to observe from the comfort of their shadows.

The art gallery is a tomb of silence, save for the rhythmic, wet slap of a cloth against glass. In the deep shadows of the periphery, a man moves with the practiced invisibility of a ghost. He is the custodian, a figure defined not by his presence, but by the absence of the grime he removes. He mops the floor where feet he will never meet have trodden; he polishes the glass shielding secrets he isn't invited to share.

Then, there is the frame.

Under a harsh, artificial spotlight, an elegant woman in a backless gown stands paralyzed in admiration. She is staring at a masterpiece—a vibrant, gold-framed oil painting that depicts a man cleaning a window in a dimly lit hallway. It is a striking composition of yellow walls and labor. She sees the "art" of his struggle, the "texture" of his isolation, and the "poignancy" of his service.

She does not see the man standing twenty feet behind her, performing the exact same action in the cold, un-gilded reality of the dark.

ABOUT THE COLOR PALETTE

This piece, titled *Fanfare for the Custodian*, leans heavily into a high-contrast, tenebrist color palette that dictates the viewer's emotional journey. The composition is dominated by deep, oppressive blacks and murky charcoal tones that swallow the peripheral space, creating a sense of isolation and nocturnal quiet. These dark expanses are interrupted by pools of sickly, sulfurous yellow and muted ochre. This specific choice of yellow—reminiscent of aging fluorescent lights and industrial cleaning agents—strips the scene of any traditional "museum" warmth, instead grounding the work in the gritty reality of labor.

The use of color also serves as a clever narrative bridge between the two "worlds" depicted. In the foreground, the woman in the elegant, desaturated white dress represents a world of cool, sterile sophistication, highlighted by the clean white glow of the gallery spotlight. However, the painting she admires is a mirror of the room behind her, utilizing a monochromatic, sepia-toned scheme that makes the janitor's yellow mop bucket pop as the only vibrant element. This creates a visual irony: the "art" is simply the drab, lived-in colors of the hallway, elevated only by a gilded frame and a focused beam of light.

The most striking symbolic element is the selective illumination. In the gallery space on the right, the lighting is intentional and prestigious; a warm spotlight hits the "art," elevating a mundane scene of cleaning into something worth of contemplation. This represents the sanitization of labor. When the custodian is framed and lit, he becomes an aesthetic object for the high-society woman in the white dress to admire.

Conversely, on the left side of the image, the "real" custodian works in a liminal, shadowy hallway. This area is characterized by:

- **Deep Tenebrism:** The shadows here represent the "invisibility" of service workers in everyday life.
- **Functional Lighting:** Unlike the gallery's warm glow, the light on the left is cold and utilitarian, suggesting that without a frame, the man's effort is part of the background architecture rather than a human story.



Les Trois Sœurs (The Three Sisters)

In Les Trois Sœurs (2025), MC invites us into a fractured yet harmonious domestic space where identity is fluid and shared. The piece is a striking exploration of sisterhood, capturing the chaotic, intertwined nature of family bonds through a lens of modern abstraction.

Narrative of the Three Sisters

At first glance, the three figures appear as a singular, undulating mass of energy. MC uses distorted, Cubist-inspired geometry to suggest that these women are not merely individuals, but reflections of one another. Their limbs overlap and their faces—rendered in contrasting hues of blue, yellow, and peach—seem to be in a state of constant shifting.

To the viewer, this conveys the psychological complexity of sibling relationships:

- **The Shared Identity:** The way the figures lean into one another suggests a lifelong support system, yet the abstract facial features hint at the struggle to maintain individuality within a close-knit group.
- **The Joy of Presence:** With arms raised in a gesture that feels like a dance or a communal exclamation, there is an undeniable sense of celebration. It captures a private moment of "controlled chaos" within the home.
- **The Meta-Narrative:** The inclusion of a framed painting within the painting—itsself a swirl of aggressive reds and blues—suggests that the sisters are surrounded by art, perhaps mirroring their own internal emotional turbulence or the creative environment they inhabit.

The work speaks to the viewer about the distortion of memory. We don't remember our loved ones in crisp, photographic detail; we remember them as colors, moods, and rhythmic movements. MC leans into this, presenting a version of sisterhood that is messy, vibrant, and inseparable.

The color palette of *Les Trois Soeurs* is a sophisticated exercise in contrast, blending soft, atmospheric pastels with sudden bursts of saturated pigment. The background is dominated by a textured, salmon-pink and dusty rose haze that creates a dreamlike, almost velvet-wrapped environment. This warmth is punctuated by the central figure's vibrant cerulean blue bodice, which acts as a visual anchor and provides a cool relief to the surrounding earthy tones. The artist uses deep blacks in the footwear to ground the ethereal composition, while the faces introduce a more experimental range—specifically the muted teal, olive gold, and rich mahogany—that evokes a Cubist sensibility. To the right, the framed artwork within the piece adds a secondary explosion of crimson and electric blue, echoing the primary colors used on the sisters and creating a rhythmic dialogue between the subjects and their surroundings.

Ok Sun

This photoart image, *Ok Sun (2025)*, is a haunting exploration of fragmented identity and the fragile boundary between the internal self and the external world. It captures a moment of "shattering," where the subject is neither fully present nor entirely gone.

This piece is a visual poem about the **beauty of being undone**. It invites the viewer to wonder: is she being destroyed, or is she finally being released from the sphere that kept her captive?

The Vessel of Self

At the center of the composition is a woman, but she is viewed through the distorted lens of a **glass orb** that is violently coming apart. This vessel acts as a metaphor for the ego or the persona—the "container" we build to hold our thoughts, memories, and physical presence together. The base of the image features heavy, metallic rings, suggesting that this construct was meant to be stable and grounded. However, the upper half tells a different story: a sudden, explosive release of pressure.

The Anatomy of a Break

The narrative suggests a metaphysical explosion.

- **The Shards:** The shards flying upward aren't just glass; they carry pieces of her features—an eye, a lock of red hair, a sliver of her brow. This implies that when our "world" breaks, our sense of self breaks with it.
- **The Colors:** The palette is a cool, sterile teal juxtaposed against the warmth of her skin and the fire of her hair. It feels like a clash between the cold reality of the environment and the vibrant life force trying to escape it.
- **The Gaze:** Remarkably, through the cracks and the warped glass, her eyes remain focused and calm. This creates a powerful tension: while her physical form and her "vessel" are disintegrating, a core consciousness remains observant, watching its own dissolution.

Themes of Deconstruction

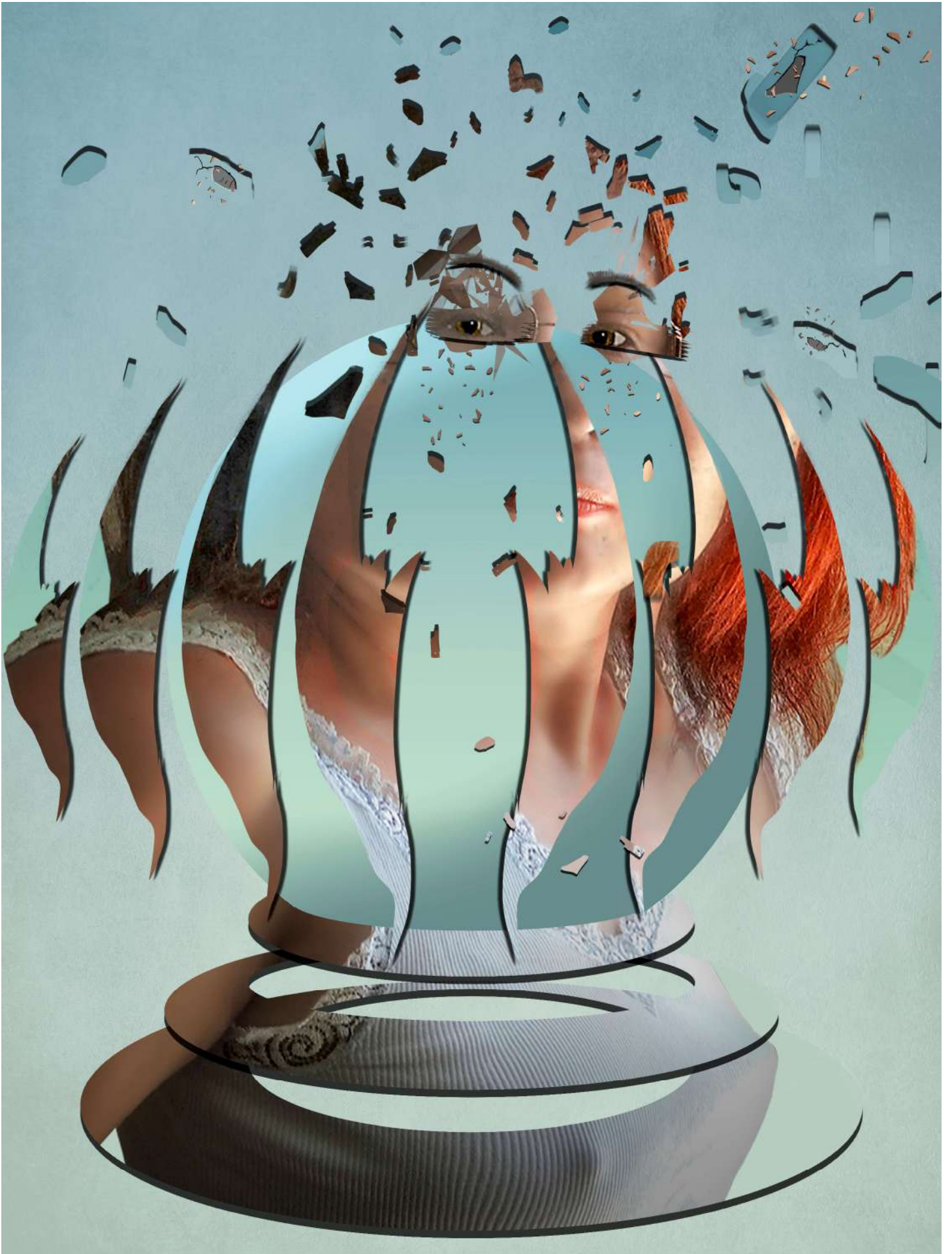
The image speaks to several profound human experiences:

Digital Dismorphia: The way the image is sliced and layered reflects our modern, "pixelated" existence, where we are often seen in fragments across different platforms and screens.

Healing through Breaking: Sometimes, a vessel must break for the contents to be free. The "shattering" could be interpreted as a breakthrough—an old version of the self being discarded to make room for something uncontained.

The Illusion of Solidity: The transparency of the orb suggests that what we think is solid (our reputation, our body, our status) is actually quite transparent and easily fractured.

Continued, page 14





PICTURE AT AN EXHIBITION

The Infinite Gaze: A Narration of *Picture at an Exhibition*

This digital composition, titled *Picture at an Exhibition (2021)* by MC, is a clever exploration of the **Droste effect**—a recursive visual trope where a picture appears within itself. It challenges our perception of reality, art, and the act of "viewing."

The Compositional Layers

The image is built on a sage-green gallery wall and a weathered wooden floor, splattered with vibrant, Pollock-esque primary colors. We can break the narrative down into three distinct "realities":

- **The "Primary" Reality:** In the foreground, a woman and a young girl stand hand-in-hand. The woman wears a long grey skirt and carries a floral tote, her gaze fixed forward. The child, in a bright yellow sweatshirt and denim shorts, provides a focal point of high-contrast color.
- **The "Captured" Reality:** On the wall hangs a framed 20x30 print. Inside this frame, the exact same woman and child are depicted standing on the same floor, looking at yet another frame.

Continued, next page.

Continued from page 11

OK SUN — ABOUT THE COLORS

The color story of this image is a masterclass in **chromatic tension**, defined by the push and pull between the sterile and the soulful.

The dominant **muted teal** of the background and the glass shards provides a cool, almost clinical atmosphere that feels detached and infinite. This "cold" space is dramatically interrupted by the **vivid, fiery copper** of the subject's hair and the **warm, fleshy tones** of her skin peeking through the fractures. This contrast creates a visceral sense of a living, breathing core attempting to break through a frozen, synthetic shell.

The interaction is further deepened by the **shimmering highlights** on the glass and the dark, heavy shadows of the metallic base, which ground the airy pastels and give the "explosion" a sense of physical weight. Ultimately, the warmth of the figure acts as a beacon of humanity, refusing to be neutralized by the vast, desaturated void that surrounds her.

- **The Infinite Loop:** The recursion continues into the distance. Each subsequent frame contains the same duo, creating a visual "hall of mirrors" that suggests an infinite progression into a digital abyss.

Artistic Style

The piece utilizes a **surrealist collage** style. The subjects are sharply cut from their original context and placed into this digital environment. This creates a slightly uncanny, dreamlike quality—the shadows are minimal, and the perspective is intentionally flattened to emphasize the graphic nature of the recursive frames.

The paint splatters on the floor serve as a bridge between the physical world (the wood) and the abstract world of the "exhibition," suggesting that the act of viewing art is, in itself, a messy and colorful experience.

The Color Palette

The color palette of *Picture at an Exhibition* is a deliberate study in contrast, pitting grounded, earthy neutrals against high-energy primary tones.

Sage Green: The sage green of the gallery wall serves as a "luminal" backdrop—a muted, non-intrusive space that allows the recursive frames to pop.

Heather Grey & Soft White: This is complemented by the heather grey and soft whites of the woman's attire, which suggest a sense of calm, everyday reality. These desaturated tones represent the "hush" of a traditional museum environment, creating a sophisticated and sterile stage for the visual loop to unfold.

Vibrant Yellow: Cutting through this tranquility is a sharp, intentional use of vibrant yellow and primary splatters. The child's bright yellow sweatshirt acts as the emotional anchor of the piece; in color theory, yellow represents optimism, curiosity, and the "spark" of discovery, perfectly mirroring a child's first encounter with art.

Magenta, Cyan & Yellow: Beneath their feet, the magenta, cyan, and yellow paint splatters on the weathered wood floor break the fourth wall of the digital collage. These colors represent the "raw materials" of creation—the CMYK spectrum of digital printing—hinting that while the scene looks like a quiet moment in time, it is a constructed, "painted" reality born from a messy, creative process.

Ultimately, *Picture at an Exhibition* is a captivating visual paradox that transforms a quiet, domestic moment into a profound meditation on the infinite nature of perception. By utilizing the Droste effect, MC strips away the boundary between the observer and the observed, suggesting that we are all participants in a grand, repeating narrative of discovery.

The juxtaposition of the weathered, paint-stained floor against the sterile gallery wall serves as a metaphor for the intersection of raw human experience and curated artistic expression. It is a piece that invites the viewer to look closer, only to realize that the further they peer into the frame, the more they are actually looking at a reflection of the act of seeing oneself.

FUN FACT:

The Infinite Loop: In theory, this creates an infinite loop. This effect is named after a 1904 box of **Droste cocoa powder**, which featured a nurse carrying a tray with a cup and a box... which featured a nurse carrying a tray with a cup and a box, and so on.

ROCKETMAN

The spotlight doesn't just hit the stage; it ignites it. In MC's digital piece, *Rocketman (2023)*, the vacuum of a dark performance hall is shattered by a kaleidoscopic eruption of color and sound. At the center of this chromatic storm sits a figure who is less a man and more a living testament to the excess and brilliance of 1970s glam rock.

This digitally drawn composition captures a moment of the spectacle of the performance with the pure, unadulterated musical catharsis. The artist, draped in an impossible plumage of neon feathers, leans into the piano with a frantic, joyful energy. The palette is a defiant strike against the shadows:

- **Electric Primary Tones:** Bold yellows and reds dominate the left side of the plumage, suggesting the heat of a rocket's ascent.
- **Cooler Counterpoints:** The right side transitions into deep purples and teals, grounding the frantic energy in a regal, velvet-like texture.
- **The Signature Silhouette:** The iconic oversized, jewel-encrusted glasses and the towering platform boots serve as the anchors of the piece, reminding the viewer that this isn't just a costume—it's a suit of armor for a superstar.

Technical Artistry

MC utilizes a digital brushwork style that feels tactile and organic. Rather than clean, clinical vectors, the edges of the feathers are frayed and textured, mimicking the movement of a performer mid-song. The background—a textured, deep forest green—provides a heavy, atmospheric contrast that makes the central figure feel like he is glowing from within. There is a charming duality in the details. On the piano, a second pair of glasses sits waiting, a quiet nod to the many "faces" and personas adopted throughout a legendary career.

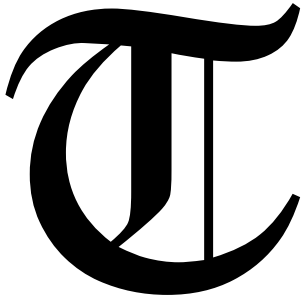
The Narrative Soul

Beyond the feathers and the sparkle, the piece tells a story of vulnerability through volume. The performer's mouth is open in a silent roar, caught in the middle of a high note that feels as though it might shatter the digital canvas. It is a portrait of the "Rocketman" at his most quintessential: isolated at his instrument, yet filling the entire universe with his presence.





La bibliothécaire (The Librarian)



The image ***La bibliothécaire (2024)*** by MC is a haunting, surrealist composition that challenges the traditional concept of a repository of knowledge. In this piece from MC's Photocratic series, the "librarian" is not a person, but a weathered, skeletal structure—perhaps a discarded cabinet or a fragment of a ship's hull—standing solitary in a desolate, ethereal landscape. The narrative of the image is not just about a person reading, but about the total immersion of the self into the medium of the book.

The Convergence of Form

The most striking element of MC's composition is the geometric deconstruction of the figure. The librarian is not merely holding a book; she is becoming one. Her dress and body are composed of sharp, angular planes that mimic the texture and fold of aged parchment. This suggests a life spent among the stacks, where the quiet rustle of pages becomes more familiar than the sound of one's own voice.

A Mind in Motion

The shifting, overlapping planes in the background represent the organized chaos of a library—a place where thousands of different worlds coexist on a single shelf. MC uses this "cubist" approach to convey:

The Multi-dimensionality of Knowledge: The librarian's mind isn't focused on a single point; it is navigating the layers of history and fiction visible in the fragmented space around her.

Quiet Intensity: Despite the sharp angles and disjointed shapes, there is a profound sense of stillness. The neutral, sepia-toned palette emphasizes a timeless, dusty atmosphere that feels both nostalgic and intellectually sharp.

The Symbolism of the Book

The book she holds, also titled *Le Bibliothécaire*, serves as a meta-commentary on her own identity.

"She is a guardian of stories, yet through MC's lens, she is also a story being told." The small, legible details like "Amour et guerre" (Love and War) scattered in the background hint at the vast spectrum of human emotion she manages daily. The way her face is rendered—simplified and tilted downward—suggests a total lack of ego. She is a vessel for the information she protects, her glasses focusing not on the external world, but on the hidden truths found in the ink.

Continued, next page.

The Narrative: The Keeper of Lost Echoes

The world of *The Librarian* is one where time has ceased to be linear. Here, in a vast expanse of salt-cracked earth and a sky heavy with the weight of unsaid words, stands the Archive. It is a tall, narrow monolith of decaying wood and rusted metal, its drawers hanging open like gasping mouths.

For centuries, this entity has stood as the silent custodian of "the forgotten." It does not house books made of paper and ink, but rather the intangible fragments of human existence: the smell of rain on hot pavement, the exact pitch of a grandmother's laugh, and the names of stars that no longer shine.

The librarian itself—the structure—is weary. Its "limbs" are the wires and supports that struggle to keep its heavy drawers from spilling their contents into the void. To look upon it is to feel the immense burden of memory. The atmosphere is thick with a quiet, monochromatic tension; there is a sense that if one were to pull out the bottom drawer, the entire history of this silent world might collapse into dust.

In Chandran's vision, knowledge is not a tidy, organized library. It is a fragile, weathered thing, exposed to the elements of neglect and the erosion of time. The Librarian stands as a sentinel at the edge of the world, reminding the viewer that stories, once forgotten, do not vanish—they simply wait in the silence, becoming part of the landscape itself.

About the colors

The color palette in MC's *The Librarian* is a masterclass in monochromatic restraint, using a narrow spectrum to evoke a specific emotional and intellectual atmosphere. Instead of relying on vibrant hues, MC utilizes a range of earth tones and desaturated neutrals to tell the story.

The Dominance of Sepia and Ochre

The primary colors used are reminiscent of aged parchment, vellum, and foxed paper. By bathing the composition in these "library tones," MC creates an immediate sensory connection to:

The Smell of Old Books: The warm browns and dusty tans evoke the scent of decaying lignin and leather bindings.

Timelessness: These colors strip away modern associations, placing the librarian in a perpetual, historical "now" that feels both antique and eternal.

High-Value Grays and Off-Whites

The librarian's dress and skin are rendered in pale, chalky whites and cool grays. This serves several functions in MC's narrative:

- **Contrast and Focus:** These lighter values make the figure pop against the muddier, darker background, drawing the eye immediately to her form.
- **The "Blank Page" Effect:** Her pale appearance suggests she is a canvas. Like a sheet of paper waiting for ink, she is defined by the information she consumes rather than by her own physical pigment.

- **The "Blank Page" Effect:** Her pale appearance suggests she is a canvas. Like a sheet of paper waiting for ink, she is defined by the information she consumes rather than by her own physical pigment.

Subtle Use of Shadows and Gradient

MC employs soft, smoky gradients—often referred to as *sfumato*—to blend the sharp geometric edges into the background.

- **Atmospheric Depth:** The transition from light tan to deep charcoal in the corners creates a sense of "dusty light" filtering through a high library window.
- **The "Mental Fog":** The blurred edges around the sharp central figure represent the transition from the physical world into the abstract world of the book.

The image suggests a profound fusion between the reader and the medium, where the librarian's body is constructed from the same sharp, folded textures as the pages she holds.

It captures the idea that we are fundamentally shaped by the stories we consume, transforming a quiet moment of study into a dynamic architectural expression of thought and identity

This specific artwork is a sophisticated exercise in modern cubism, utilizing sharp geometric planes and a muted, earthy palette to deconstruct its subject. The figure is rendered through a series of interlocking shards and folded textures that mimic the very paper she handles, suggesting a physical and intellectual blending of the librarian with her environment. The artist cleverly uses light and shadow to create depth within these flat shapes, giving the dress a pleated, structural quality while the background dissolves into abstract layers of taupe, slate, and sepia.

Beyond its formal composition, the piece captures a quiet, **cerebral intimacy**. The librarian's tilted head and the delicate way she holds the open book—titled *Le bibliothécaire*—evoke a sense of deep immersion and reverence for the written word. Subtle details, like the faint French text on the scattered papers ("Amour et guerre"), hint at the vast narratives contained within her world. It is a work that feels both nostalgic and contemporary, transforming a traditional scholarly scene into a dynamic, rhythmic exploration of form and thought.



THE PIRATE



he Pirate (2021) is a striking example of contemporary photoart that merges portraiture with abstract digital manipulation. It challenges the viewer's perception of a traditional swashbuckler by deconstructing the subject through a lens of chaos and fragmented memory.

Visual Composition and Style

The piece is characterized by its **fragmented, geometric layering**. Rather than a clean, singular image, the artist has used a "shattered glass" or "cubist" effect to break the pirate's form into numerous overlapping planes.

- **Deconstruction:** The central figure is built from jagged, triangular shards. This technique creates a sense of movement and instability, as if the pirate is emerging from—or dissolving into—the background.
- **Color Palette:** The work utilizes a gritty, earthy palette dominated by **ochre, burnt sienna, and deep blacks**. These tones are punctuated by muted teals and reds in the clothing, suggesting weathered fabric and dried blood.
- **Texture:** There is a heavy use of digital "noise" and brushwork. Gritty textures and splatters overlap the figure, bridging the gap between a photograph and a traditional oil painting.

Key Elements & Symbolism

THE FACE: The pirate's face is obscured by heavy, skull-like war paint or grime. His piercing eyes provide the only point of direct engagement, creating a sense of menace and intensity.

The Arms: His arms are crossed in a defensive or defiant posture. The skin tones are fleshy and raw, contrasted against the sharp edges of the digital fragments.

The Weaponry: To the lower left, the grip of a flintlock pistol is visible. Its presence is subtle, grounding the abstract work in the historical reality of the "pirate" archetype.

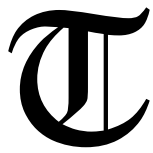
The Background: The environment is indistinct, resembling a mix of foliage and rocky walls. This ambiguity keeps the focus entirely on the psychological state of the character.

Artistic Themes

The piece transcends a simple costume study to explore deeper themes:

- **The Fractured Identity:** By breaking the body into pieces, MC suggests that the life of a pirate is one of brokenness and re-assembly. He is a man made of many parts, perhaps none of them whole.
- **Ghostly Presence:** The way the bottom of the figure fades into black smoke and abstract lines gives the pirate a spectral quality. He feels less like a living man and more like a legend or a haunting memory.

Continued, next page



he narrative woven into this image by MC entitled, *The Violin (2023)*, is one of deconstruction and resonance. It suggests that music isn't a static thing contained within a wooden box, but a force that shatters and rearranges the very air around it.

Imagine the artist, MC, standing before this piece. He isn't producing an image of a violin; he's communicating the *aftermath* of a crescendo. Here is the narrative he conveys to the viewer:

1. The Moment of Impact

MC wants you to feel the physical tension of a string being plucked. In this world, sound has weight. The background isn't just wallpaper; it's the **fabric of reality** breaking into slate-colored shards. As the violin plays, the "solid" world of the room can no longer hold its shape. It fragments into the sharp, cubist triangles you see, vibrating in sympathy with the music.

2. The Dissonance of Form

Look closely at the body of the instrument. MC has intentionally shifted the alignment of the wood. The bridge is displaced, and the f-holes are disconnected from the center.

- **The Message:** Perfection is boring. True art comes from the "break."
- By slicing the violin, the artist conveys that to truly understand an object, you must see it from multiple angles and moments in time simultaneously.

3. Warmth vs. Cold

There is a deliberate struggle between the warm amber of the spruce and maple wood and the cold, stony greys of the background.

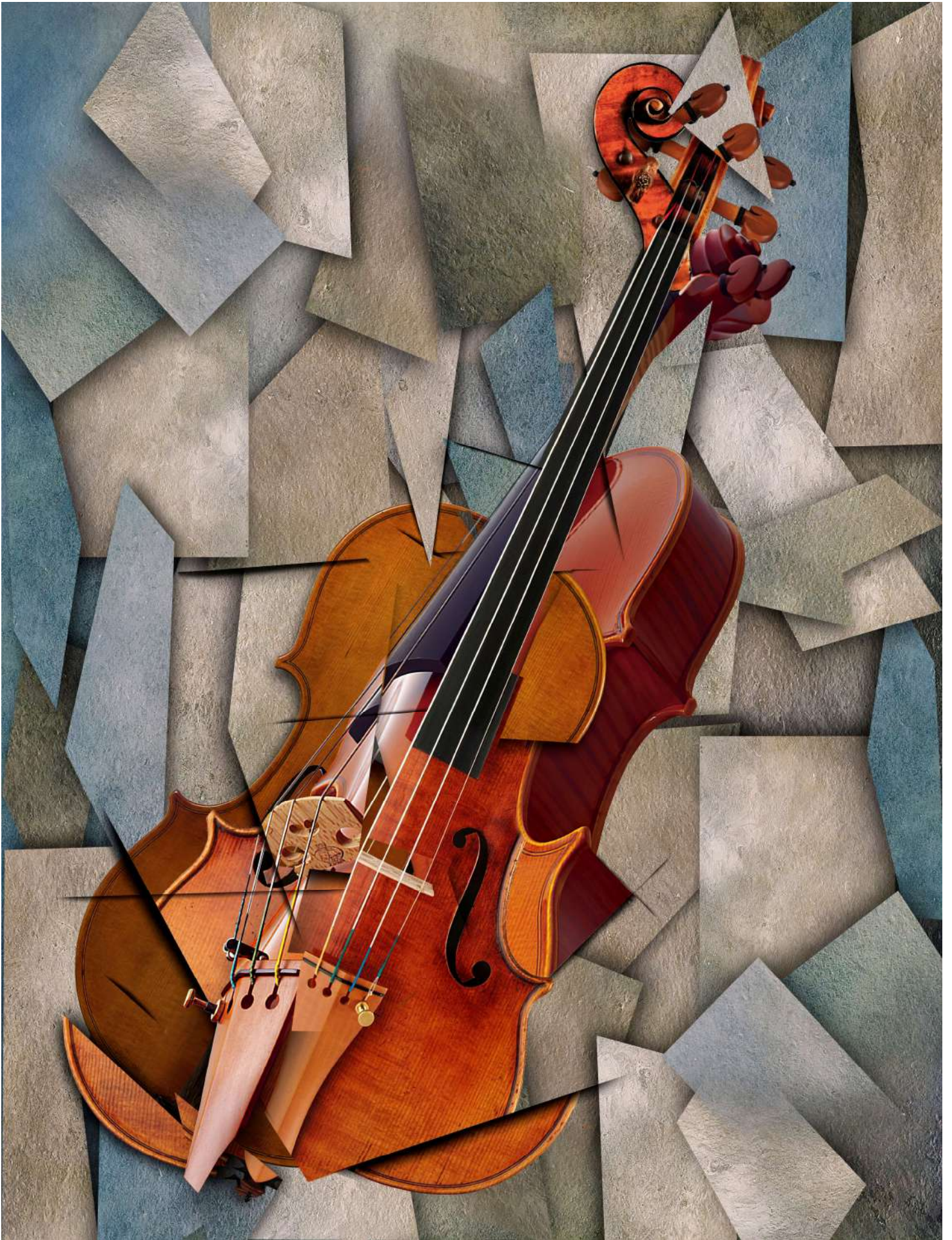
- The violin represents the human soul — organic, curved, and vibrant.
- The grey shards represent the logical, rigid world.
- MC is showing us that the "soul" of the music is literally carving its way through the coldness of the environment, forcing the grey stone to make room for the melody.

Ultimately, MC is telling you that perception is fragmented. We never see the whole truth of a moment at once; we see pieces of it—a flash of a scroll here, the grain of the wood there, a shadow falling across a string.

He invites you to stop looking for a "whole" violin and start appreciating the beauty of the pieces. It's a call to find harmony in the middle of a shattered world.

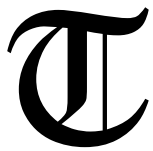
About the colors

The deep, honeyed ambers and rich mahoganies of the violin's varnished wood provide a striking organic warmth that anchors the composition, standing in sophisticated defiance against the cool, architectural slates and stony greys of the fractured background.





PORTRAIT OF ADMIRAL YI SUN-SIN



This image is a striking blend of historical reverence and modern abstraction. To understand how MC constructed this portrait of Admiral Yi Sun-sin, we have to look at it as a structural puzzle where texture, geometry, and color collide.

MC's approach to this piece feels less like "painting" and more like architectural assembly. The construction can be broken down into three distinct phases:

1. The Sculptural Foundation

The central figure isn't rendered with soft gradients; it's carved. MC used sharp, intersecting arcs and stone-like textures to build the Admiral's face. By using a "paper-cutout" aesthetic—where each feature looks like a separate physical layer—the artist suggests that Yi Sun-sin is a man made of bedrock. The heavy, downward-curving lines of the mustache and the sharp slit of the eye convey a sense of weary, immovable resolve.

2. The Fragmented Perspective

The composition is intentionally disrupted. MC uses vertical, ribbon-like bands that slice through the portrait. These serve as a visual barrier, forcing the viewer to piece the Admiral together. This construction mimics the way history works: we see a legendary figure through the "slats" of time, myth, and fragmented records.

3. Textural Contrast

While the face carries a granular, sandstone texture, the background and foreground elements introduce different "materials." You have the organic, leafy patterns in the upper right and the cross-hatched, sea-like textures in the lower left. This anchors the figure between the land he protected and the sea where he won his glory.

The Interaction of Colors

The palette is sophisticated and restrained, relying on a triad of earthy, metallic, and oceanic tones.

Stone Grays & Ochre: These dominate the Admiral's face. The interaction here is about **depth**; the darker charcoal lines act as "shadow cracks" in a statue, while the ochre highlights provide a warmth that keeps him looking human rather than purely like a monument.

Steel Blue & Slate: These cool tones weave through the vertical ribbons. They provide a **sharp contrast** to the warm browns of the face, acting as a visual cooling agent. They represent the "Iron" of the Turtle Ships and the coldness of the Joseon waters.

Muted Gold/Tan: These ribbons are the most "forward" element. They overlap the cooler blues, creating a vibrant tension. Because they are complementary to the blues, they make the cool colors pop, preventing the image from feeling stagnant or flat.

MC has created a portrait that feels both ancient and avant-garde. The colors don't just sit next to each other; they compete for space, mirroring the turbulence of the Imjin War while maintaining a core of absolute stillness.

- **Chaos vs. Order:** The rigid geometry of the "shards" attempts to impose order on a subject that is inherently chaotic and wild.

Technical Execution

The work is a sophisticated blend of high-resolution photography and digital compositing. MC used layering masks and blending modes to achieve the transparency between the shards. The light source is diffused, coming from the upper right, which creates deep shadows that add to the "gritty" and "noir" aesthetic of the piece.

"The Pirate" captures the spirit of a pirate's life not through a romanticized lens, but through a shattered, psychological portrait of survival and identity. The fragmented composition mirrors the "broken" nature of men who fled structured society to live as outlaws; they were individuals composed of stolen parts, weathered by salt and violence. The heavy, mask-like face paint and the way the figure dissolves into dark, smoky textures at the base evoke the spectral and fleeting existence of the Golden Age—a life that was often "nasty, brutish, and short." By layering the subject in jagged shards, the artist illustrates the constant tension between the pirate's need for a rigid internal code and the chaotic, lawless world they inhabited. It is a visual representation of a life lived in the shadows of the "noose," where the only thing more permanent than the grit on their skin was the intensity of their defiance.

The Color Palette

The color story of "The Pirate" is a masterclass in **chromatic tension**, using a palette of "earth and blood" to ground the abstract composition. The dominant fields of **ochre, raw sienna, and golden browns** in the background and skin tones provide a grit that feels synonymous with sun-scorched decks and dried salt. These warm, desaturated tones create a sense of antiquity, as if the image itself is a decaying relic recovered from a shipwreck. However, this sepia-toned world is pierced by sharp accents of **deep crimson and muted teal**. The red, appearing in the sash and the weathered fabric, acts as a visceral reminder of the violence inherent in a pirate's life, while the teal provides a cold, oceanic counterpoint that prevents the image from feeling purely monochromatic.

These colors emphasize the image by creating a **psychological depth** that mirrors the pirate's fractured identity. The heavy use of **charcoal and absolute black** at the base and in the facial "war paint" creates a visual anchor, suggesting that the character is literally emerging from—or being consumed by—the shadows of his own reputation. The high contrast between the bright, fractured shards of the shirt and the lightless voids around the eyes forces the viewer to confront the subject's intensity directly. By using "muddy" textures layered with "shining" highlights, the artist emphasizes the **dual nature of piracy**: the filth of the daily grind versus the fleeting, golden flashes of plunder and glory.

How Color Enhances a Subject

Emotional Weight: Colors can shift the "vibe" of a subject instantly (e.g., warm tones for comfort, cool tones for professionalism).

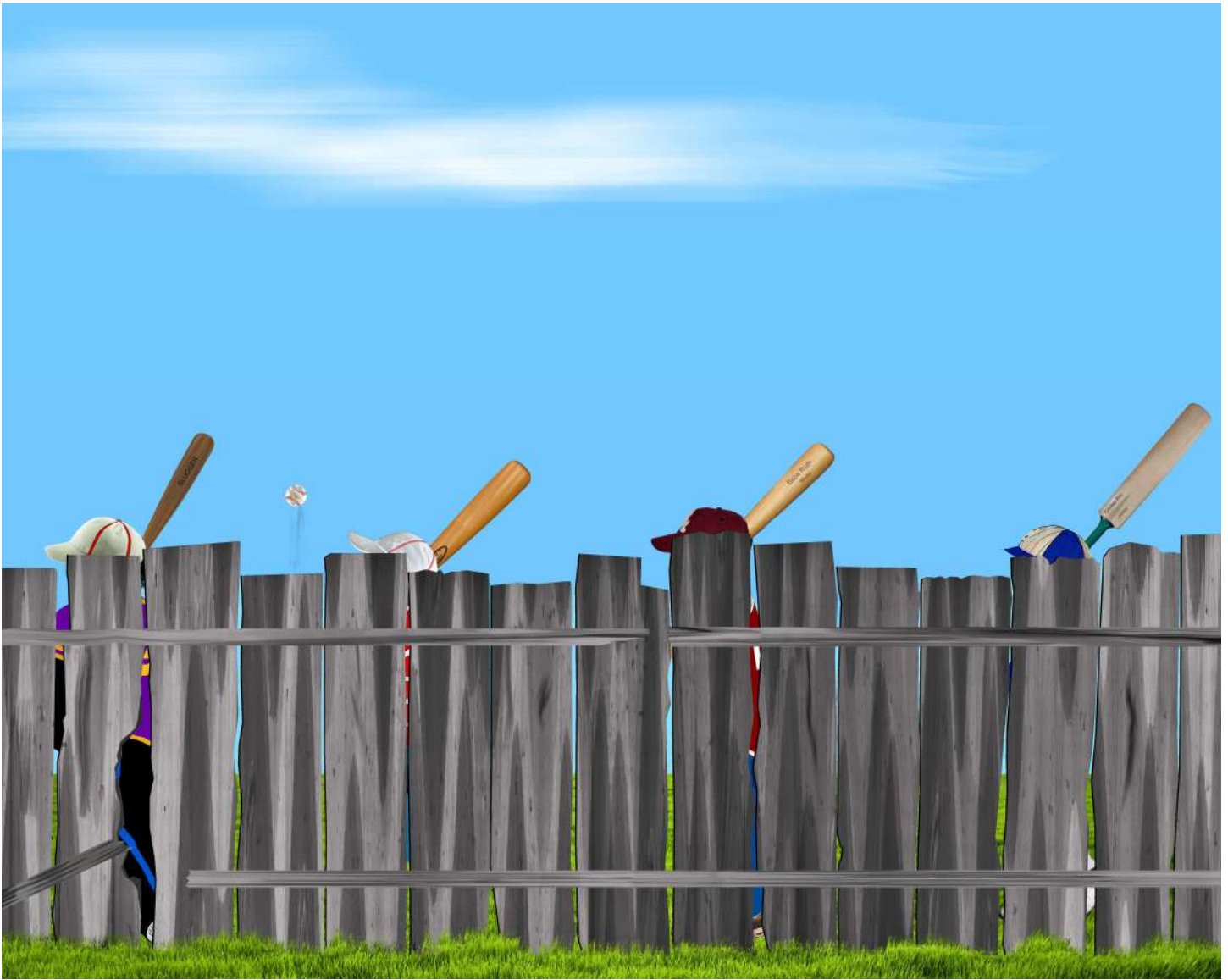
Visual Hierarchy: Bright or saturated colors draw the eye first, helping you control what the viewer notices.

Context and Storytelling: Natural palettes can ground a subject in reality, while surreal colors can signal fantasy or innovation.

Functional Clarity: In technical subjects, color-coding simplifies complex data, making information easier to digest at a glance.

Illustrations

(Pre-2020)



THE NEW KID

This illustration by MC entitled *The New Kid (2018)* is a poignant exercise in visual storytelling, using a simple wooden barrier to explore themes of belonging, cultural friction, and the quiet isolation of being "different." Through its deliberate choices in composition and color, it captures the moment a newcomer from England is trying to fit in with a pre-established American neighborhood kids but doesn't quite understand the culture yet.

The most striking element of the composition is the **strong horizontal division** created by the grey, weathered fence. It serves as a literal and metaphorical wall between the audience and the subjects.

- **Rhythmic Repetition:** The figures are spaced evenly across the canvas, creating a rhythmic pattern of hats and baseball bats. This repetition establishes a "norm"—a collective identity of the group going to the neighborhood sandlot to play baseball.
- **The Outlier:** On the far right, the rhythm is intentionally broken. While the first three figures hold

standard, tapered baseball bats at similar angles, the final figure—the "New Kid"—holds a **cricket bat**. This subtle shift in geometry disrupts the visual flow, immediately signaling to the viewer that this individual brings a different history to the field.

- **Occlusion:** By hiding the faces of the children behind the fence, the artist strips away individual personality, turning the scene into a study of archetypes and equipment. We don't see their expressions; we only see what they carry.

Color and Texture: Vibrant Hope vs. Dull Reality

The color palette uses high contrast to evoke a sense of a bright, endless summer, while grounding the foreground in a more somber reality.

- **The Sky:** The vast, saturated blue of the upper two-thirds of the image suggests **unlimited potential** and the "wide-open" nature of childhood play. The wispy white clouds add a sense of movement and lightness.
- **The Fence:** In stark contrast, the fence is rendered in desaturated greys and browns. It feels old, heavy, and static. It represents the "rules" or the social barriers that must be navigated before one can reach the vibrant green grass on the other side.
- **The Accents:** Small pops of color—the red of a cap, the purple of a jersey—draw the eye to the figures. Notably, the blue grip on the cricket bat links the "New Kid" to the color of the sky, perhaps suggesting that their different perspective is just as much a part of the vast world as the traditional game being played.

Conveyance: The Silent Dialogue

The illustration conveys a narrative of quiet observation. There is no action depicted—no one is swinging, and the lone baseball hangs suspended in the air, almost like a question mark.

- **The Suspended Ball:** The ball is positioned between the first and second players, drawing focus to the anticipation of playing a baseball game. It emphasizes that the "New Kid" is currently working to assimilate into his new neighborhood and culture.

The Color Palette

The color interaction in *The New Kid* is a study in chromatic tension, where the vibrant, saturated hues of the upper atmosphere pull against the grounded, desaturated tones of the foreground.

The brilliant cerulean of the sky acts as a massive "open" space, representing the limitless nature of the game and the potential for inclusion. This is anchored by the rich, textured green of the grass, which provides a lush, energetic stage for the figures. However, these two fields of vitality are sliced in half by the neutral grey-brown of the fence.

This muted, wooden barrier acts as a visual "dead zone" that separates the viewer from the action. By placing the "New Kid" against this neutral backdrop, their specific color accents—like the teal grip on the cricket bat—become focal points of identity. The interaction suggests a world that is bright and welcoming in theory, yet physically partitioned by the dull, weathered realities of social barriers.



GRAND SLAM

T

This image by MC entitled *Grand slam (2018)*, captures a moment that feels both nostalgic and slightly surreal. It's a snapshot of a "Grand Slam" that transcends a simple game of baseball, leaning into the evocative, dreamlike memories of childhood.

The most striking element is the vantage point. We aren't on the field with an intimate view of the game in progress; we are behind a weathered, makeshift wooden fence. By placing the viewer here, MC conveys a sense of longing or exclusion.

- **The Fence:** The gaps and broken slats suggest a world that is aging or "weathered," contrasting with the kinetic energy of the ball.
- **The Glimpse:** We only see a small child in blue through a narrow gap on the right. This suggests that the "glory" of the moment—the home run—is something we are witnessing from the periphery, perhaps reflecting on a past that is now out of reach.

MC uses a clever juxtaposition of textures to create a sense of movement:

- **The Ball:** The baseball is rendered with hyper-realistic detail compared to the stylized, painterly fence. It feels "heavier" and more present, appearing to fly right over the viewer's head.
- **The Trail:** The faint white arc behind the ball emphasizes the **inevitability** of the shot. It's a perfect hit, frozen in time.

The "Grand Slam" of Memory

The inclusion of the farmhouse visible through the broken slats in the center adds a layer of **Americana**. It suggests a rural, quiet setting where a game of baseball is the main event of the day.

The image isn't just about a sport; it's about the scale of childhood achievements. To a small child (like the one running in the corner), hitting a ball over that high fence feels like a "Grand Slam" in the bottom of the ninth at the World Series. MC captures the gravity of that small-town triumph.

In this piece, MC uses lighting and shadow not just to create a sense of three-dimensional space, but to establish a specific emotional temperature. The lighting is the "clock" of the image, telling us exactly when and where we are in this memory.

1. High-Noon Verticality

The lighting is characterized by a top-down orientation. Look at the horizontal cross-beams on the fence; the shadows they cast onto the vertical slats are short and sharp.

- **The Effect:** This indicates the sun is directly overhead. In visual storytelling, "High Noon" represents the peak of summer heat and a moment of maximum clarity. There are no long, soft shadows of evening here—everything is exposed, bright, and stark.

2. The "Bleaching" Effect

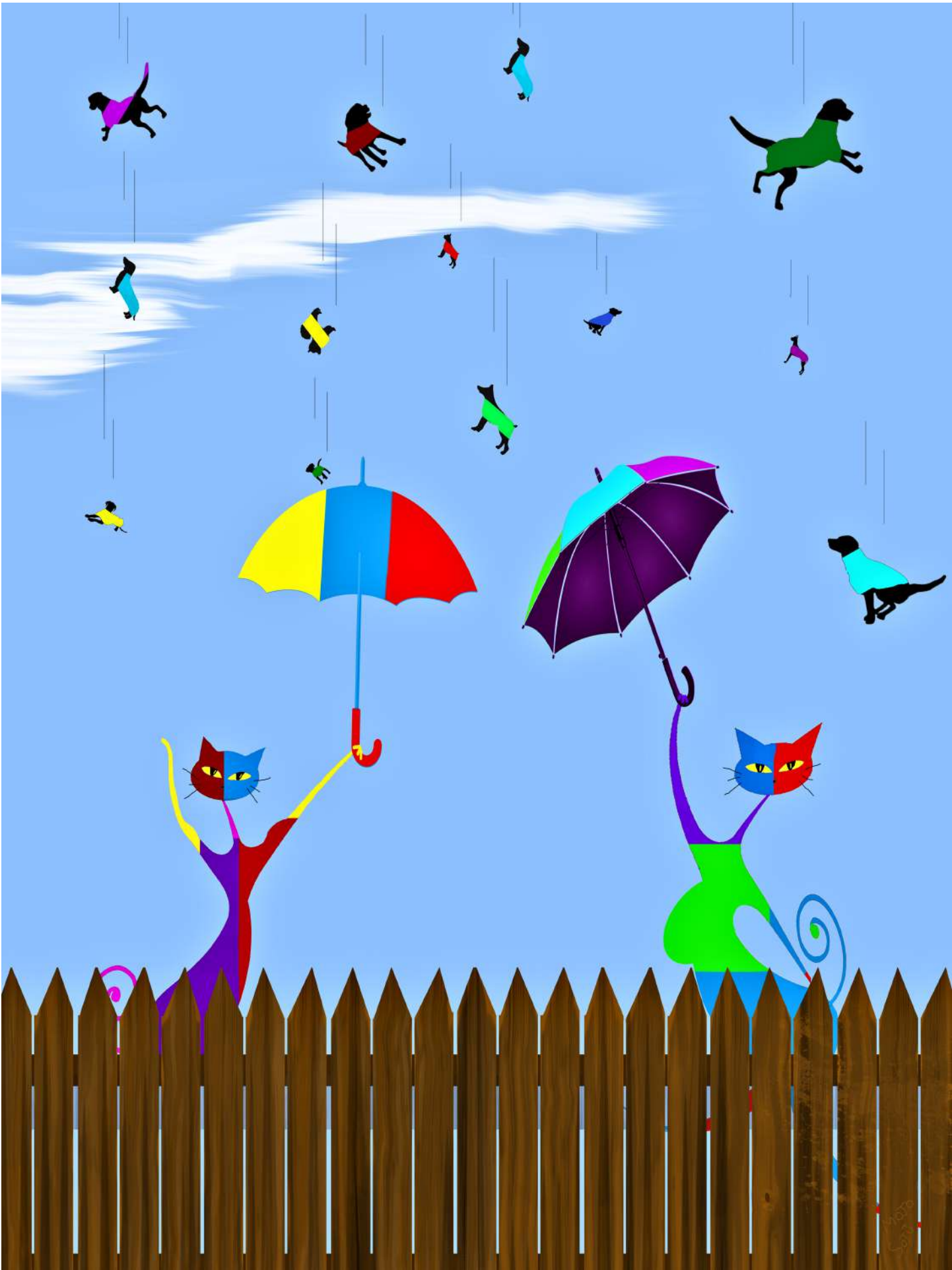
The artist uses a desaturated palette for the wood, which suggests light-bleaching.

- **The Technique:** By using pale greys and muted tans for the fence, MC conveys the intensity of the sun. The wood looks bone-dry, as if it has been baked for decades. This contrast makes the blue of the sky and the saturated blue of the child's shirt feel more vibrant and "alive" against the deadened wood.

3. Internal vs. External Shadows

There is a sophisticated play between the shadows on the surface of the fence and the shadows *behind* it.

- **The Gaps:** The darkness visible through the cracks in the wood isn't just black; it's a deep, cool shadow. This creates a "layering" effect. It suggests that while the front of the fence is scorching in the sun, there is a mysterious, shaded world (the Miller farmhouse) just inches away.
- **The Ball's Shadow:** Notice that the ball itself lacks a cast shadow on the fence. This is a deliberate choice. By omitting a shadow on the wood, the artist makes the ball feel higher and further away, suspended in the vastness of the sky rather than hovering close to the barrier.



ALL DOGS RAIN

In MC's vibrant and surreal digital illustration *All Dogs Rain (2018)*, is a visual play on the classic idiom "it's raining cats and dogs."

The piece serves as a playful commentary on role reversal, using bold colors and geometric shapes to create a whimsical alternate reality.

In this world, the sky doesn't fall with water, but with a steady downpour of silhouetted canines. These "raindrops" are dogs of various sizes and breeds, each outfitted in a different brightly colored raincoat—neon greens, cyans, purples, and yellows. They drift downward against a serene, light blue sky streaked with thin, wispy clouds.

The protagonists of this scene are two stylized, bipedal cats standing behind a rustic wooden picket fence. Unlike the dogs falling from the sky, these cats are composed of sharp angles and split-color patterns, reminiscent of cubist or pop-art influences.

- **The Cat on the Left:** A lithe figure split down the middle in purple and red, holding up a primary-colored (yellow, blue, and red) umbrella. Its expression is one of calm, wide-eyed observation.
- **The Cat on the Right:** A more curvaceous figure dressed in bright green, sporting a split blue and red face. It holds a purple umbrella aloft, shielding itself from the literal "dog weather."

Artistic Elements

1. Color and Contrast

MC uses a high-saturation palette that pops against the tranquil blue background. The use of complementary colors—such as the purple umbrella against the yellow raincoat of a falling dog—creates a sense of visual energy and movement.

2. Symbolism and Irony

The irony is the heart of the narrative. While the cats are traditionally the ones "chased," here they are the sophisticated observers, safely shielded by umbrellas while the dogs are reduced to a weather phenomenon. The fence acts as a boundary between the "domesticated" viewer and the chaotic, falling outside world.

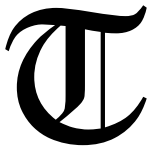
3. Composition

The vertical motion of the dogs is balanced by the horizontal line of the fence and the vertical reach of the cats' arms. This creates a stable, yet dynamic grid that keeps the viewer's eye moving across the canvas to spot the different colored coats on the falling pups.

This illustration leans heavily into Neo-Pop Art. The characters are non-anatomical, focusing instead on flowing lines and flat planes of color. There is a distinct sense of digital "cleanliness" combined with a folk-art charm, making the bizarre concept feel approachable and humorous rather than chaotic.



BIRDBRAIN



This illustration by MC, entitled *Birdbrain (2018)*, is a vibrant, stylized piece that uses high-contrast colors and minimalist shapes to deliver a whimsical—yet potentially satirical—message.

1. Composition and Color Palette

The image is dominated by a warm, **monochromatic background** consisting of golden-yellow and ochre hues. The horizontal brushstrokes suggest a vast, hazy sky or a setting sun, which creates a desert-like or late-afternoon atmosphere.

- **The Silhouette:** The dark, silhouetted tree provides a strong vertical anchor on the left, with branches reaching out toward the light.
- **Color Contrast:** The birds are the primary focus. Their plumage consists of saturated, "artificial" colors (electric blue, neon green, bright red, and purple) that pop aggressively against the natural tones of the tree and sky.
- **The Moon/Sun:** The large, textured white orb in the upper right creates a focal point that balances the heavy weight of the tree trunk on the opposite side.

2. Symbolic Elements

The title "Birdbrain" typically refers to someone who is scatterbrained or lacks common sense. MC uses visual irony to explore this:

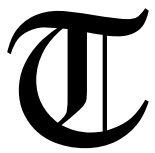
- **The "Outlier" Bird:** While thirteen birds sit exposed on the upper branches, one lone bird sits on the lowest branch holding an ornate, multi-colored umbrella.
- **The Irony of Protection:** The sky is clear, and the sun is shining brightly. The umbrella-wielding bird is technically "protecting" itself from all the droppings from the birds perched above. However, one could argue this bird is the only "smart" one, shielding itself from the other birds droppings.
- **Social Conformity:** The birds at the top are clustered together, following a standard behavior. The bird at the bottom is physically and behaviorally separated, suggesting a commentary on individuality versus the "flock" mentality.

Birdbrain is a playful jab at perception. To the birds at the top, the bird with the umbrella looks foolish and out of character for protecting itself. To the bird at the bottom, the others might look foolish for following the crowd in all they do.

This illustration captures that specific feeling of being the only person in a room (or on a tree) who is operating on a completely different logic than everyone else.



From Cradle to Grave



This illustration, titled *Cradle to Grave (2018)* by MC, is a striking, minimalist exploration of the cycle of life set against a haunting, monochromatic landscape. The image utilizes a bold, high-contrast palette of deep crimsons and fiery oranges, immediately evoking a sense of intensity, transition, or perhaps a world in twilight.

Visual Composition

- **The Setting:** A vast, silhouetted graveyard stretches across the mid-ground. The headstones and markers are varied—ranging from simple slabs to Celtic crosses and obelisks—suggesting a collective history of loss that spans different eras and beliefs.
- **The Atmosphere:** The sky is dominated by a heavy, layered haze and a large, pale celestial body (likely a sun or moon) that feels distant and cold despite the warmth of the surrounding colors.
- **The Focal Point:** In the foreground, a singular dark cross stands apart. Perched upon it is a white bird—a universal symbol of peace, purity, or the soul—sitting next to a small nest.

MC's piece offers a poignant, slightly surrealist take on mortality. It suggests that even in a place defined by finality, life is persistent and cyclical. The bird building a home upon a monument of death serves as a powerful reminder that the "cradle" and the "grave" are often closer than they appear, occupying the same space in the grander design of nature.

The artistic style of "Cradle to Grave" by MC can be categorized as Minimalist Digital Surrealism with strong influences from Expressionism. It prioritizes emotional resonance and symbolic clarity over realistic detail, using a distinct "flat" aesthetic to create a sense of timelessness.

Here is a breakdown of the specific stylistic elements:

Cradle to Grave lies in its profound use of **juxtaposition**.

While the title suggests a linear journey—a beginning followed by an end—the visual composition argues that life and death are not separate chapters, but rather a single, continuous dialogue. By placing a fragile nest and a white bird atop a symbol of mortality, MC suggests that life does not merely exist *after* death or *before* it, but often thrives right in the middle of it.

The overwhelming red of the landscape feels less like a warning and more like an eternal, pulsing heartbeat. It transforms the graveyard from a place of static silence into a vibrant, albeit somber, ecosystem. Ultimately, the piece serves as a visual meditation on resilience: it reminds us that even in our final resting places, the "cradle" of the next generation is already being built.

It is a hauntingly beautiful reassurance that while individuals pass, the song of life is never truly silenced.



Jack Benny's Vindictive Cat

This illustration by MC, titled *Jack Benny's Vindictive Cat (2018)* is a whimsical, yet biting, piece of surrealist cartoon art. It draws heavily on mid-20th-century pop culture references—specifically the legendary comedian Jack Benny—to create a scene of musical sabotage and feline spite.

1. The Cultural Context: Jack Benny

To understand the "vindictive" nature of the cat, one must know the persona of Jack Benny. Benny was famous for a long-running gag involving his self-proclaimed mastery of the violin. In reality, he played reasonably well, but his character was perpetually "terrible," often shown struggling through Rimsky-Korsakov's *The Bee*.

- **The Sabotage:** By destroying the violin bow (the "horsehair" is seen shredded and hanging loosely), the cat has effectively silenced the music.

- **The Burial:** The violin is partially buried in a mound of dirt, suggesting the cat has treated the instrument like waste in a litter box—a ultimate sign of feline disrespect.

2. Visual Style and Composition

MC uses a "digital collage" or "vector-surrealist" style, characterized by sharp contrasts between textured backgrounds and smooth, cartoonish foreground elements.

Color Palette

- **The Sky:** A deep, saturated red creates an atmosphere of intensity or mock-horror. The colorful, sweeping bands across the sky and the glowing, planet-like sun add a psychedelic, otherworldly feel.
- **The Grass:** The bright, synthetic green provides a high-contrast base, making the orange cat and the wooden violin pop.

The Protagonist (The Cat)

The cat's design is the focal point of the humor. Its expression is one of manic glee rather than typical feline indifference.

- **The Grin:** The oversized, porcelain-white teeth clamped onto the bow suggest a triumphant, almost villainous satisfaction.
- **The Eyes:** The half-lidded, yellow eyes convey a "crazed" look, reinforcing the idea that the cat has finally snapped after hearing one too many off-key notes.

3. Symbolic Elements

Shredded Bow: The destruction of the "voice" of the instrument.

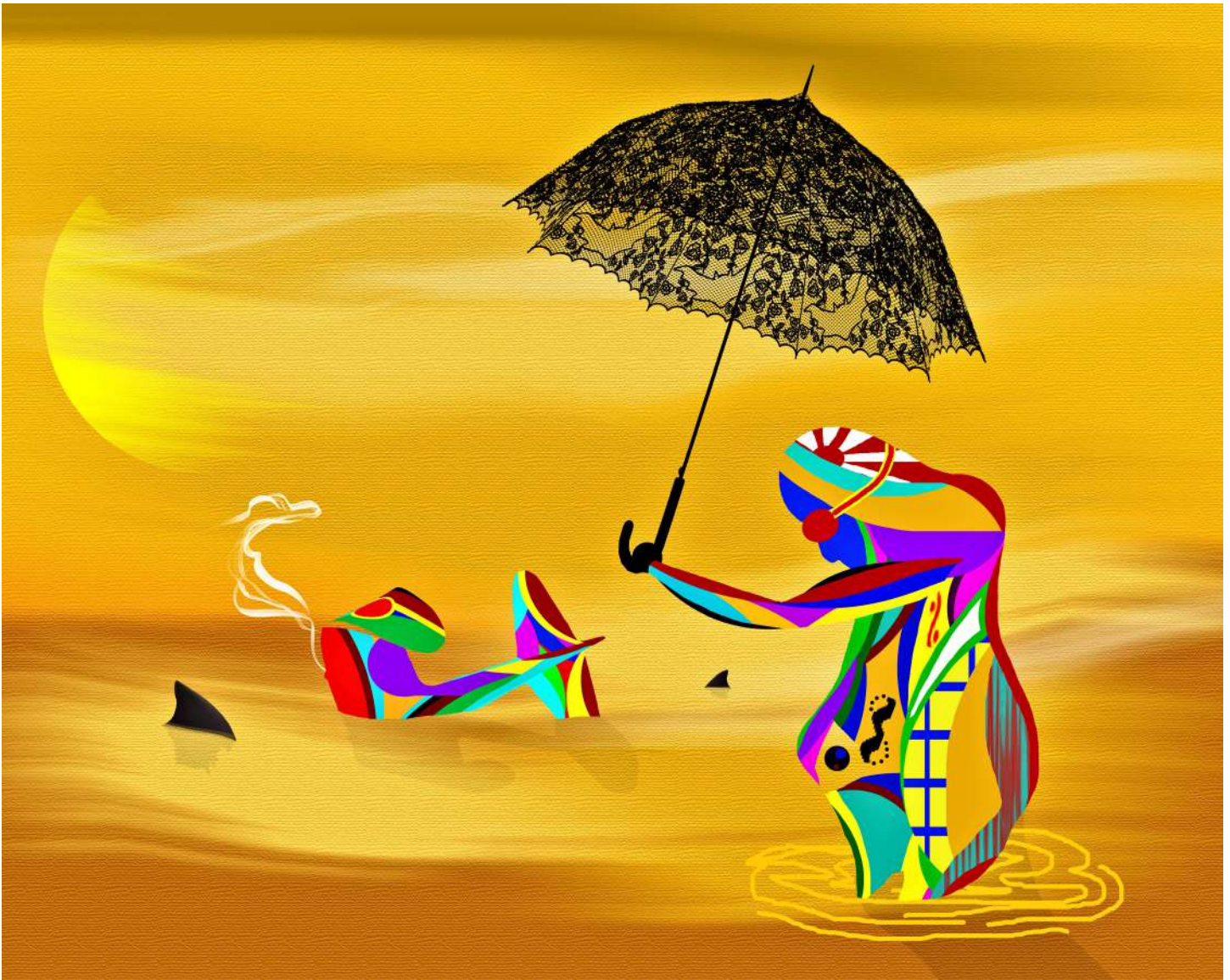
The Dirt Mound: A literal and figurative "burial" of a hobby or a nuisance.

The Sun/Moon: The hazy, striped celestial body suggests this act of vengeance took place in a dreamscape or a warped reality.

4. Final Impression

This illustration is a successful exercise in visual storytelling. It captures a specific moment of "sweet revenge." The "vindictive" quality mentioned in the title is perfectly personified in the cat's wide, toothy smirk. It transforms a common household annoyance (a pet hating loud music) into a surrealist tall tale.

The illustration utilizes a digital collage technique, blending highly textured elements—like the stippled red sky and realistic grass—with the smooth, flat vectors of the cartoonish cat. This stylistic juxtaposition creates a surrealist depth, making the manic character pop against its more naturalistic, albeit color-warped, environment.



The Uncertified Kamikaze

T

his digital illustration by MC entitled *The Uncertified Kamikaze* (2018) is a striking exercise in surrealism and vibrant abstraction. It juxtaposes the grim historical weight of its title with a whimsical, almost hallucinogenic aesthetic.

The Absurd Aftermath

In a golden, textured void that could be a desert or a sea of honey, a figure stands in silent vigil. This is not the typical image of a warrior; they are a patchwork of primary colors and organic shapes, crowned with the "Rising Sun" motif that hints at their identity.

The "Kamikaze" has arrived, but perhaps not in the way history had intended. The plane is a toy-like wreckage, puffing a delicate trail of white smoke into the amber sky. There is no fire, only a quiet, colorful dissolution. The protagonist stands knee-deep in a golden ripple, holding an ornate, lace-patterned umbrella—a delicate shield against a sun that feels heavy and omnipresent.

As shark fins circle in the distance, the scene captures a moment of "uncertified" peace: a crash that resulted not in a tragedy, but in a strange, silent transformation.

The piece relies heavily on the tension between its **subject matter** and its **visual style**.

1. Color Palette and Texture

- **Monochromatic Background:** The use of varying shades of gold and ochre creates a sense of heat and timelessness. The canvas-like texture adds a physical, tactile dimension to a digital medium.
- **Vibrant Abstraction:** The central figure and the aircraft are rendered in a "Pop Art" meets "Psych-Surrealism" style. The clashing blues, reds, and yellows pull the eye immediately toward the center, contrasting sharply with the hazy, monochromatic environment.

2. Symbolism and Irony

- **The Umbrella:** The most intricate element is the black lace umbrella. It serves as a symbol of domesticity and fragility. Positioning a "Kamikaze" under a parasol strips the figure of military aggression, replacing it with a sense of vulnerability or even Victorian-esque mourning.
- **The Shark Fins:** These suggest a lingering danger. Even in this bright, colorful world, the "sharks" of consequence or reality are circling the wreckage.
- **"Uncertified":** The title suggests an amateur status. This isn't a state-sanctioned sacrifice; it's a personal, perhaps accidental, descent. It frames the crash as a failure of a mission but a success of the spirit.

3. Composition

The artist uses a rule-of-thirds approach, placing the figure on the right to balance the wreckage on the left. This creates a narrative flow: we see the result of the flight (the plane) and then the survivor (the figure).

3. Conclusion

The illustration functions as a visual meditation on survival as an absurdity. The figure stands in a "golden nowhere," shielded by a lace umbrella that is functionally useless against the existential heat of the sun or the circling sharks of reality. This creates a profound irony: the warrior prepared for a sudden, violent end is instead gifted—or cursed—with a slow, beautiful, and confusing survival. The vibrant, clashing colors of the figure represent the messy complexity of life, which stands in stark contrast to the sterile, monochromatic void of the "mission" they left behind.

Ultimately, this piece is a testament to the resilience of the individual spirit against the rigid structures of "certification" or "duty." By transforming a site of wreckage into a canvas of pop-abstraction and delicate lace, MC suggests that even our greatest failures can be repurposed into a strange, new kind of beauty. The smoke from the plane isn't a signal of distress, but rather a fading breath of an old identity, making room for the "uncertified" life that follows.

The work leaves the viewer with a lingering question: if we strip away the titles and the missions we are "certified" for, what color is the soul that remains standing in the aftermath?



Under the Weather

The illustration *Under the Weather* (2018) by MC is a striking exercise in visual metaphor, using a deceptive, almost childlike art style to deliver a heavy sociopolitical message. At first glance, it appears to be a simple row of suburban homes, but the sky tells a much more fractured story.

The piece is structured around three distinct "zones" of experience, each represented by a house and its corresponding atmosphere.

- **The Facade of Normalcy:** The houses are bright, colorful, and neatly manicured with bushes and paths. This represents the idealized "home"—safety, stability, and the domestic sphere.
- **Localized Realities:** The sky is not a single entity. Instead, the "weather" is targeted. The first two houses are subjected to heavy, localized downpours, while the third house sits under a clear sky.
- **The Umbrella Symbolism:** Floating black umbrellas act as fragile, surreal shields. They are physically disconnected from the houses, suggesting a protection that is either magical, precarious, or granted by an outside force.

- **The Looming Threat:** In the upper right corner, the "weather" changes from rain to falling bombs. This is the pivotal moment of the piece, shifting the meaning of the title from a common idiom for illness to a literal description of living under the threat of aerial warfare.

Narrative Themes

1. The Inequality of Suffering

The illustration speaks volumes about selective protection. Why does one house have a clear sky, but is under attack while the other two has soft rain? It highlights the privilege of geography and the arbitrary nature of where "the storm" hits. In a global context, it suggests that while two neighborhoods enjoys a summer afternoon shower, another just a few "panels" away is experiencing a man-made catastrophe.

2. The Fragility of the "Shield"

The umbrellas are a poignant choice for a defense mechanism. Against rain, an umbrella is standard; against bombs, it is pathetically useless. This creates a sense of false security. It suggests that the systems we put in place to protect our domestic lives are laughably thin when faced with the "heavy weather" of modern conflict or systemic collapse.

3. The Recontextualized Idiom

To be "under the weather" usually implies a mild cold or feeling slightly unwell. By placing literal bombs in the sky, MC subverts this phrase. The "illness" here isn't biological; it's a societal sickness—war, violence, and the uneven distribution of peace.

A Tale of Three Windows

In the green house, the tea is warm. The sun, or at least the clouds, feels like a permanent resident. The inhabitant might look out the window and wonder why the neighbors have their umbrellas up. To them, the sky is a constant, blue and indifferent.

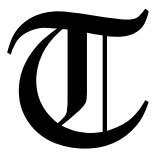
In the blue house, the world is gray. The rain isn't a passing storm; it is a localized ceiling. Life continues, but it is lived in the damp, under the shadow of a hovering black silk canopy that offers just enough cover to keep the floors dry, but not enough to stop the chill.

But in the yellow house, the "weather" has turned terminal. The clouds have birthed steel. There is a terrifying silence in the illustration—the moment before the impact. The umbrella hangs there, a hauntingly optimistic gesture against the weight of the munitions above. It is a story of how quickly "home" can be redefined by what the sky decides to drop.

The color palette in *Under the Weather* serves as a jarring emotional anchor, utilizing high-contrast saturation to highlight the absurdity of the scene. The houses are rendered in "storybook" primaries—vibrant yellows, sky blues, and mint greens—which evoke a sense of suburban bliss and childhood innocence. However, this warmth is choked by the heavy, charcoal blacks of the umbrellas and the bruised, smeared teals of the background sky. The grass transition from a healthy lime to a toxic, murky forest green at the bottom suggests a foundation that is literally losing its light. This chromatic tension creates a "false cheer"; the brightness of the homes feels like a thin veneer of paint desperately trying to ignore the gray, metallic reality of the bombs and rain descending from above.



Woman by the Window



This image by MC entitled *Woman by the Window (2019)* is a striking exercise in Chiaroscuro—the dramatic use of light and shadow to create volume and psychological depth. It feels less like a simple photograph and more like a digital painting that bridges the gap between reality and a dream.

1. Composition and Framing

The image uses a "frame within a frame" technique. The dark, expansive void of the interior focuses the viewer's eye entirely on the window. The silhouette of the woman acts as a secondary frame, leading our gaze toward the illuminated village across the water.

2. The Play of Light

The lighting is the primary storyteller here:

- **The External Light:** The warm, amber glows from the hillside houses suggest a bustling, lived-in world that stands in stark contrast to the woman's isolation.
- **The Internal Light:** A single, low-placed candle flickers in the bottom right, barely illuminating a cracked wall. This "internal" light is weak and fragile compared to the "external" world.
- **Reflection:** The vertical streaks of light on the water create a sense of stillness, grounding the otherwise ethereal scene.

3. Symbolism

- **The Cracked Wall:** This subtle detail near the candle suggests decay or a history of hardship within the room.
- **The Hat:** By obscuring the woman's face with a wide-brimmed hat, the artist strips away her specific identity, allowing her to represent a universal feeling of longing or waiting.
- **The Sheer Curtains:** These act as a thin, translucent barrier—a metaphor for the veil between her current state and the world she is observing.

The Silent Shore

The room smells of damp stone and old wax. She doesn't move; she hasn't for an hour. To anyone looking from the hillside across the bay, her window is just another dark rectangle in a black facade. But to her, the hillside is a tapestry of lives she no longer touches.

Every light in those distant windows represents a dinner conversation, a child being tucked in, or a secret shared in a hallway. She sits in the heavy velvet of the dark, her hat still on as if she is perpetually ready to leave but lacks the destination.

The candle at her side is a dying sun, casting long shadows against the cracks in the plaster. It's a quiet vigil. She isn't watching the village so much as she is listening to the silence of the water, waiting for the moment when the last light across the bay goes out, leaving her truly alone with the stars.

Women in a Poppy Field

This piece, titled *Women in a Poppy Field (2020)* by MC, is a striking example of digital impressionism that blurs the line between photography and abstract painting. It captures a fleeting, ethereal moment that feels both nostalgic and avant-garde. The photo was originally taken at a poppy field in Gwang-Ju, South Korea.

The artwork utilizes a heavy digital "smear" or liquid distortion technique, which creates a sense of movement as if the viewer is looking through a rain-streaked window or witnessing a memory mid-fade.

- **The Subjects:** Two women stand amidst the flora. The woman on the left shields her eyes from the sun, while the woman on the right looks ahead with a serene expression, holding a bright yellow umbrella. Their features remain relatively clear, acting as the emotional anchor of the piece.
- **The Palette:** The color scheme is dominated by vivid yellows, organic greens, and pops of magenta. The yellow umbrella serves as a secondary light source, casting a warm, golden glow over the scene.
- **Textural Depth:** The "poppies" are rendered with thick, painterly digital strokes. Rather than being sharp botanical studies, they are bursts of color that blend into the surrounding greenery, emphasizing feeling over form.

There is a beautiful tension between protection and exposure in this work. The umbrella and the hand shielding the eyes suggest a defense against the elements, yet the subjects are completely enveloped by the wild, chaotic growth of the field.

The distortion technique suggests transience. By melting the foreground and background together, MC creates a "dreamscape" effect, suggesting that this isn't just a photo of a field, but a representation of a specific, hazy afternoon that exists only in memory.

MC's "Women in a Poppy Field" is a vibrant fusion of photography and digital abstraction, transforming a candid moment of sun-drenched serenity into a fluid, impressionistic dreamscape.



Photo art
In
Monochrome



Affliction of Desire

This digital piece, *Affliction of Desire (2019)*, is a haunting exploration of the sensory and the ethereal. It uses a monochromatic palette to strip away the distractions of color, forcing the viewer to confront the raw textures and the heavy, almost suffocating atmosphere of the subject's internal world.

The Gilded Weight

The figure in the image is a woman caught between two worlds. She is draped in the symbols of abundance—lush grapes and delicate foliage—yet her expression is far from celebratory. She is the embodiment of the title's paradox: the "affliction" that comes from wanting too much, or perhaps, having too much and finding it hollow.

She gazes off-canvas, her eyes bright and searching, as if looking for an exit from the very luxury that surrounds her. The grapes, often symbols of Dionysian pleasure and fertility, here feel like heavy beads of a rosary or a burden of excess. They press against her, merging with her form through digital distortion, suggesting that her desires have become inseparable from her physical self. She is not just holding the fruit; she is being consumed by it.

MC's technical approach creates a sense of temporal layering, where different "moments" of the digital canvas seem to exist at once.



- **Composition and Texture:** The piece is a masterclass in digital "noise" and intentional glitching. On the right, sharp, horizontal brushstrokes and grid-like patterns suggest a digital breakdown, contrasting with the soft, realistic rendering of the woman's face and chest.

- **Contrast and Lighting:** The high-key lighting on her forehead and eyes acts as the focal point. It gives her a "deer in the headlights" quality, emphasizing the psychological weight of the piece. The deep shadows beneath the grapes create a physical sense of mass and gravity.

- **Symbolism of the Vines:** The swirling, filigree-like lines that dance across her skin and hair act like a web. They serve as a visual metaphor for the "desire" mentioned in the title—an intricate, beautiful, but ultimately constricting force.

Affliction of Desire captures the moment pleasure turns into a haunting. By using a monochromatic filter, MC removes the "sweetness" of the fruit and the "warmth" of the skin, leaving behind a cold, structural look at the human condition. It suggests that desire is not a simple path to happiness, but a complex, textured landscape that can just as easily trap us as it can fulfill us.



Midnight Walk

T

his image by MC entitled *Midnight Walk (2018)*, is a striking piece of digital post-processing that leans heavily into abstract expressionism. It moves beyond a simple photograph of a street and becomes a study of isolation, memory, and the "in-between" spaces of urban life.

The power of this piece lies in its verticality and high-contrast monochrome palette. Here is a breakdown of the visual elements:

- **Motion and Texture:** The vertical motion blur creates a "weeping" effect, as if the scene is melting or viewed through a rain-slicked window. This strips away the physical details of the subjects, turning them into archetypes rather than individuals.
- **Composition:** The frame is anchored by a dark, looming vertical element on the left (likely a tree or pillar) which provides a sense of depth. The cobblestone path at the bottom center offers the only "sharp" geometric texture, grounding the viewer in a physical location before the rest of the world dissolves upward.
- **Chiaroscuro Effect:** The use of light is masterful. The central glow—presumably a streetlamp—acts as a spiritual or psychological beacon. It doesn't illuminate the path clearly; instead, it casts the figures into deep silhouette, emphasizing their status as "shadows."

The Echoes at Midnight

The city doesn't sleep; it just forgets.

In *Midnight Walk*, we aren't looking at two friends walking home from a bar or a couple sharing a quiet moment. We are looking at memory.

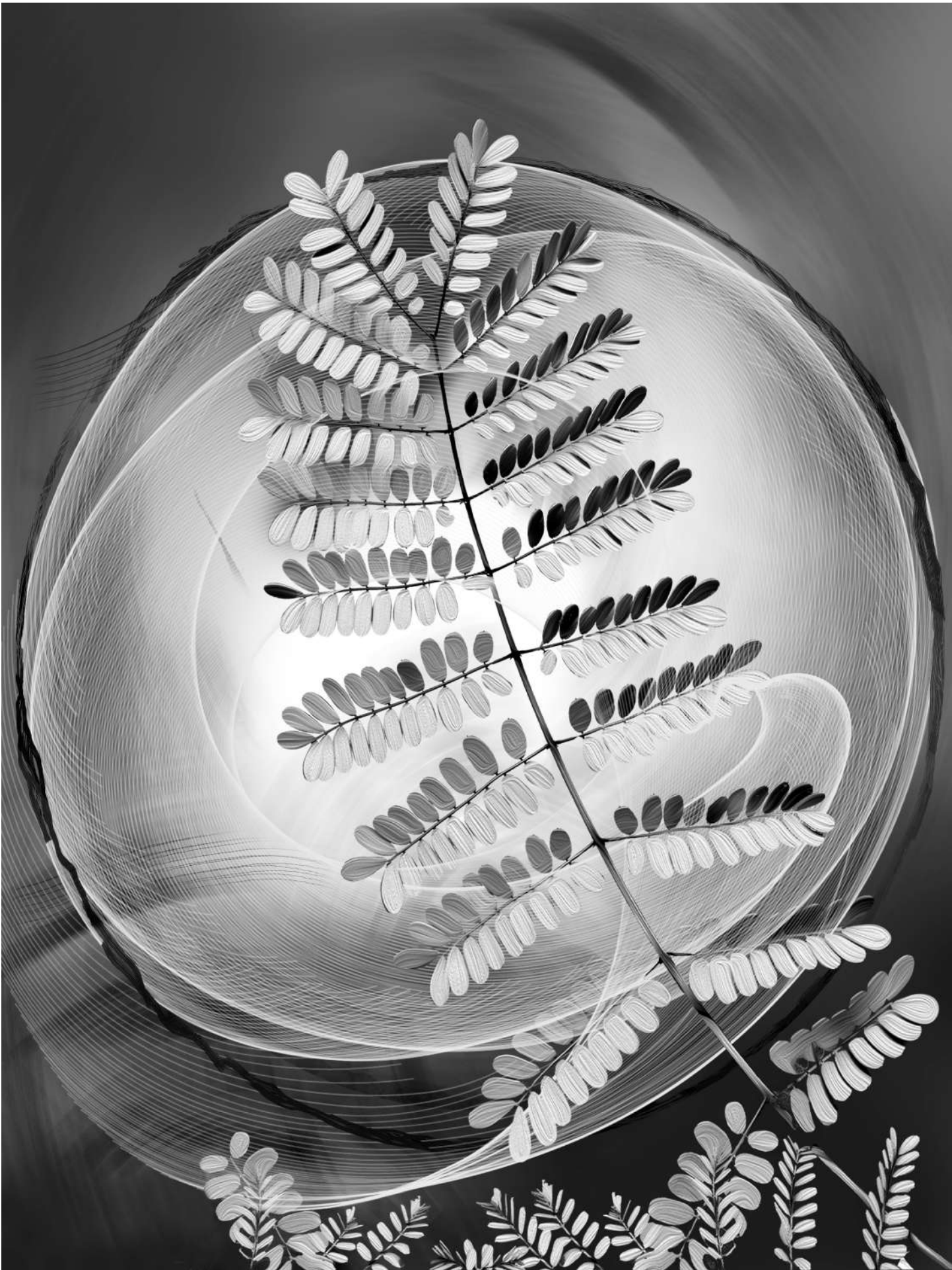
The figures are soft-edged and fleeting, suggesting the way a specific night feels years after it has passed—vague, haunting, and slightly cold.

The atmosphere is one of liminality. The subjects are caught between the safety of the light and the absolute void of the right-hand side of the frame. There is a profound sense of "transit"—not just moving from Point A to Point B, but moving through a state of being. The vertical streaks suggest a falling sensation, as if the world is moving too fast for the protagonists to remain solid.

They walk in silence. The cobblestones under their feet are the only things that feel real, a rhythmic *click-clack* that anchors them to the earth while the rest of the city turns into a ghost. It's a walk that feels like it could last forever, or perhaps it ended a long time ago, and we are just seeing the light that remained behind.

Midnight Walk is less a depiction of a physical stroll and more an exploration of the subconscious. By stripping away the sharp edges of reality, MC forces the viewer to engage with the *feeling* of the night rather than the facts of it.

The piece succeeds because it captures the inherent tension of the urban experience: the thin line between being part of a crowd and being entirely alone. The vertical distortion acts as a visual metaphor for the passage of time—fluid, blurred, and impossible to catch.



Fern Glow

This digital composition, *Fern Glow (2018)*, by MC, is a striking exercise in monochrome contrast and organic geometry. It bridges the gap between scientific botanical illustration and ethereal abstract art, using light as a primary structural element.

The artwork centers on a bipinnate leaf structure—reminiscent of a fern or a mimosa branch—set against a backdrop of luminous, swirling energy.

- **Contrast and Tone:** By stripping away color, MC forces the viewer to focus on **texture and luminosity**. The stark black of the central rachis (the main stem) provides a grounding "skeleton" for the piece, while the leaflets transition between chalky whites, deep grays, and silhouetted blacks.
- **The "Glow" Effect:** The background is not a static void but a series of concentric, translucent orbs and wispy filaments. These shapes create a **halting sense of motion**, as if the plant is being viewed through a lens or caught in a moment of bioluminescent discharge.
- **Composition:** The diagonal orientation of the main fern creates a sense of growth and upward movement. The smaller fern fragments at the bottom edge suggest a larger thicket, providing a sense of scale and depth.

The Pulse of the Undergrowth

Imagine standing in a forest at the exact moment the sun is eclipsed, or perhaps in a world where plants do not reflect light, but generate it.

The fern in the center isn't just a biological specimen; it is a conductor. The swirling rings of white light around it feel like a magnetic field or a rhythmic pulse—the "heartbeat" of the forest floor. There is a quiet tension here. The delicate, rounded leaflets look soft to the touch, yet they are trapped in a vortex of energy that feels both scientific and supernatural.

As your eyes follow the stem upward, the light intensifies, blurring the lines between the physical plant and the atmosphere surrounding it. It suggests that even in the darkest, most monochrome corners of nature, there is a hidden, radiant energy keeping everything connected.

Artistic Interpretation

"Fern Glow" reminds us of Kirlian photography—a technique used to capture the "aura" of objects through electrical discharges. MC captures that same sense of wonder, making the mundane fern look like a sacred relic of the natural world.



Blow by Blow

In *Fern Glow*, MC presents a striking monochrome digital composition that feels like a snapshot of a dream caught in a windstorm. Despite the title's suggestion of lush greenery, the grayscale palette shifts the focus toward **texture**, motion, and the interplay of light.

A Journey of Displacement

The piece tells a story of resilience and transition. We see two central floral figures—delicate, trumpet-shaped flowers—bowed under an invisible but powerful force.

- **The Grounded vs. The Airborne:** The stems are arched to their breaking point, suggesting a struggle to remain rooted. Meanwhile, smaller blossoms are being swept away into the dark upper-right quadrant. This creates a narrative of loss or perhaps a "scattering of seeds," symbolizing how ideas or life stages are often forcibly moved from one environment to another.
- **The "Glow":** The light doesn't come from a sun; it seems to emanate from the flowers themselves and a central, hazy rift in the background. It suggests an internal strength—a "glow" that persists even when the environment becomes chaotic or "noir."

Visual Composition and Dynamics

MC uses a sophisticated mix of organic forms and harsh, industrial-feeling textures to create tension.

Movement and Directionality

The piece is dominated by a strong diagonal sweep from the bottom-left to the top-right.

- **Motion Blur:** The flying flowers have "tails" or streaks behind them, a classic visual shorthand for high speed.
- **The Arc:** The long, thin stems create a bridge-like silhouette that frames the central void, directing the viewer's eye toward the "storm" in the upper corner.

Texture and Contrast

The artist employs a variety of digital "brushes" to create a layered depth:

- **Foreground Splatter:** The bottom of the frame is heavy with white, speckled textures resembling frost, sea foam, or distressed paint.
- **Atmospheric Background:** The sweeping bands of gray look like long-exposure photography of clouds or perhaps a planetary ring, adding a cosmic scale to the scene.

Composition and Narrative

The piece is dominated by two primary floral figures, their stems arched in dramatic, gravity-defying curves. These flowers appear both resilient and vulnerable, anchored in a textured, almost "gritty" foreground that resembles frothing water or decaying earth.

The background is a cinematic blur of kinetic energy. Broad, sweeping brushstrokes suggest a powerful gust or a cosmic slipstream, pulling smaller floral fragments—resembling spirits or petals—into a deep, dark void. This creates a narrative of transience: the idea that even the most grounded beauty is subject to the relentless "blow" of time or nature.

The title, *Blow by Blow*, suggests a sequence of events—perhaps a struggle or a detailed accounting of a storm. It captures a pivotal moment of impact, frozen in time, where the stillness of the flora meets the violence of the gale. It is an evocative meditation on perseverance amidst displacement.

Blow by Blow leaves with the viewer is a poignant meditation on grace under pressure. It conveys the idea that while we are often caught in "storms"—whether emotional, societal, or literal—there is an inherent elegance in the way we bend. The image doesn't show the flowers breaking; it shows them yielding to a force much larger than themselves.



TARKUS

This image, titled *Tarkus (2018)* by MC, is a hauntingly beautiful exercise in surrealism and high-contrast digital composition. It evokes a sense of "artificial nature"—a world where the organic has been meticulously reconstructed through a lens of digital abstraction.

Composition and Contrast

The piece is dominated by a central, vertical subject: a single rosebud amidst a tangle of leaves and stems. The use of a monochromatic palette (black, white, and varying shades of gray) forces the viewer to focus on texture and light rather than color.

- **The Focal Point:** The rosebud itself is rendered with a stark, almost "over-exposed" white against deep black sepals. This gives it a luminescent, lantern-like quality, as if the light is emanating from within the flower rather than reflecting off it.

- **Layering:** There is a distinct layering effect. The foreground foliage on the bottom left appears relatively sharp and grounded, while the background dissolves into a nebulous, painterly wash that resembles both storm clouds and watercolor stains.

Texture and Technique

MC blends several distinct visual styles here:

- **The Organic:** The leaves have a delicate, realistic venation.
- **The Digital/Abstract:** The horizontal bands cutting across the lower third of the image suggest a "glitch" or a digital horizon line, breaking the illusion of a natural landscape.
- **The Ethereal:** The "aura" or mist surrounding the plants suggests a dreamscape. The way the stems twist and interact feels more like a choreographed dance than natural growth.

"The Silver Bloom"

In a world where the sun has forgotten its name, there is only the silver.

Deep within the Grey Expanse, where the clouds never break and the wind carries the scent of static and old rain, the *Tarkus* rises. It does not grow from soil, but from the memory of it. Its leaves are stiff, like pressed tin, clicking softly against one another as the mist rolls through the stalks.

Look at the center—the heart of the machine-garden. The bud is tight, a porcelain secret held between dark fingers of shadow. It doesn't wait for spring; spring is a myth in this monochrome desert. Instead, it waits for a pulse. It feeds on the light that leaks through the cracks of the sky, drinking in the grey until it glows with a cold, fierce electricity.

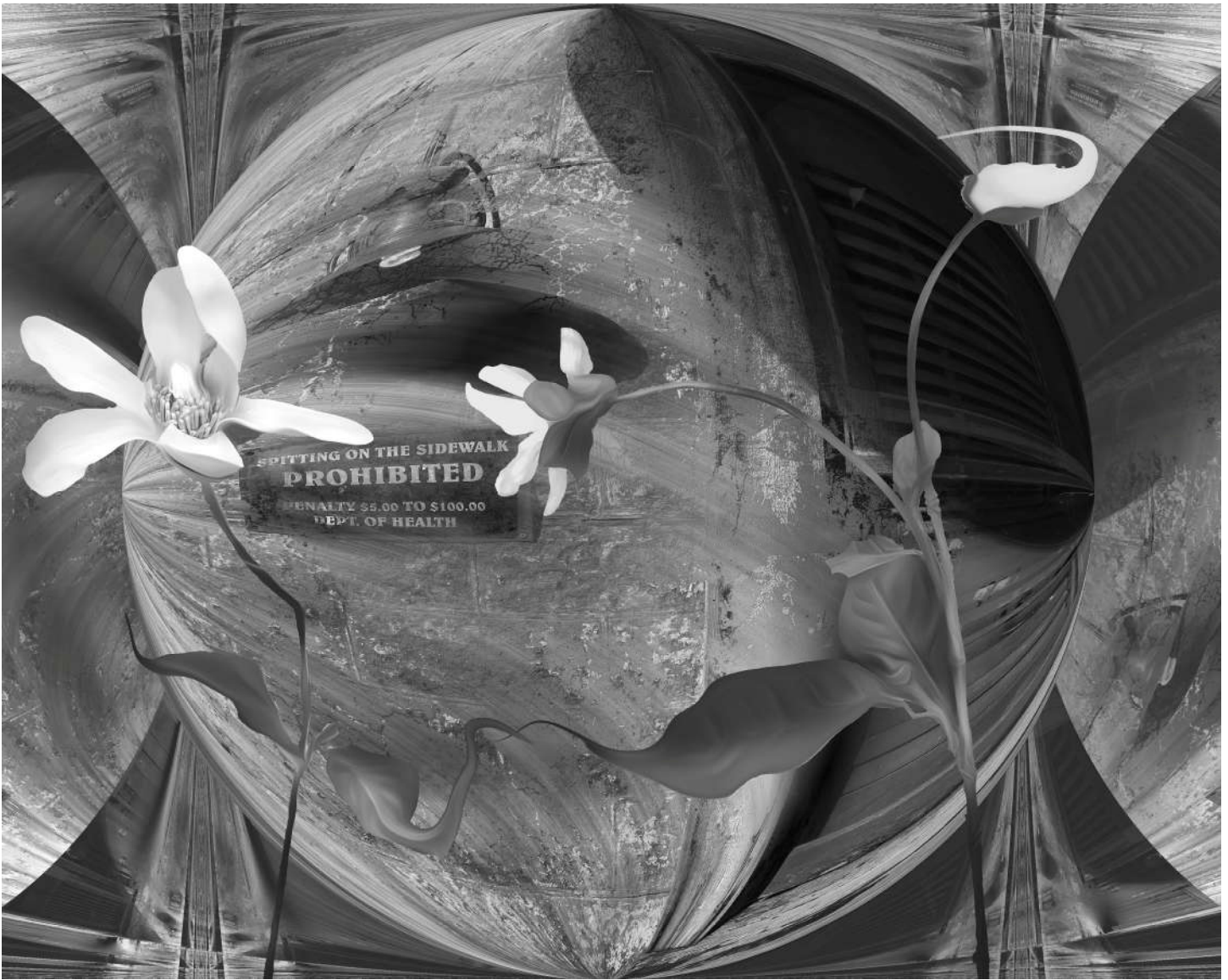
On the horizon, the world is flat and streaked with white lines—the edges of a map that leads nowhere. Everything is silent, save for the slow, steady heartbeat of a rose that refuses to be still in a world that has stopped moving.

When a viewer stands before *Tarkus*, they are likely to experience a transition from seeing a simple botanical study to discovering a complex, layered dreamscape. The experience of viewing this piece is often described as a "slow reveal." Here is a breakdown of what the viewer's eye typically tracks and perceives:

The viewer's eye is immediately pulled to the stark white rosebud. Because it is the brightest element against a moody, textured background, it acts as a visual anchor. As the gaze moves downward, the viewer encounters the sharp, horizontal white streaks cutting across the lower third of the composition.

Once the main subject is processed, the viewer notices the background. It isn't a clear sky; it's a wash of grain,

Finally, the viewer notices the way the stems interact. They don't just grow upward; they curve and intersect in ways that feel deliberate and almost calligraphic.



Prohibited

A

As a viewer looks at this photo art image by MC entitled *Prohibited (2019)*, it reveals itself as a striking exercise in surrealist juxtaposition and mathematical distortion. It blends the grit of urban history with the delicate fluidity of nature, all wrapped in a "fisheye" or spherical perspective that forces the viewer to reconsider their vantage point.

The Sphere of Control

The composition is dominated by a spherical projection, a technique often used to mimic the curvature of a lens or a self-contained world. This creates a sense of enclosure—as if we are looking at a "snow globe" of a specific moment in time.

1. The Urban Relic

At the focal point of the sphere is a weathered sign that reads:

This sign anchors the image in a historical reality, likely referencing the early 20th-century public health campaigns (such as those during the tuberculosis or 1918 flu pandemics). The texture of the wall behind it is gritty and eroded, suggesting the passage of time and the decay of "civilized" order.

2. The Organic Intrusion

Contrasting sharply with the hard, grey textures of the city are the magnolia-like flowers. They are rendered with a smooth, almost liquid grace.

- **The Contrast:** While the sign represents rigid human law and the "prohibition" of bodily fluids, the flowers represent the effortless "flow" of nature.
- **The Placement:** The stems appear to grow out of the distorted architecture itself, ignoring the "prohibited" nature of the space.

3. Distortion and Symmetry

The background uses a repetitive, mirrored architectural pattern. The arches at the top and the vertical lines at the bottom create a "hall of mirrors" effect. This suggests that the "rules" and the "urban environment" are infinite and inescapable, yet the flowers remain the only unique, non-repeating elements in the frame.

This piece is a surrealist exploration of the tension between rigid social order and the irrepressible flow of nature, framed within a distorted, spherical perspective that warps a historical urban prohibition into a dreamlike landscape

"The Unruly Bloom"

The story within *Prohibited* is one of defiance.

Imagine a city scrubbed clean by mandate, where even a cough or a stray drop of saliva is a crime against the collective health. The sign is a stern reminder of a world that values sterility and order above all else. The textures are cold; the world is monochrome, drained of the "messiness" of color and life.

However, in the center of this regulated sphere, something "prohibited" happens anyway. Life—in the form of these pale, ghostly flowers—erupts. Nature doesn't read signs. It doesn't care about the Department of Health or the \$100 penalty.

The flowers serve as a silent protest. Their curves break the harsh, geometric lines of the distorted buildings. The image suggests that no matter how much we try to box in reality with laws, grids, and spheres of influence, the organic world will eventually crack through the sidewalk.



Beware of Loose Women

This photo art piece by MC entitled *Beware of Loose Women (2018)*, is a striking example of digital surrealism that plays with perspective, texture, and social irony. It pulls the viewer into a fish-eye lens world where the organic and the weathered collide.

Upon first glance, the viewer is met with a high-contrast, monochromatic composition dominated by a spherical distortion. It feels as though we are looking through a glass orb or a peephole into a forgotten space.

- **The Focal Point:** A distressed, weathered door or wall is warped into a globe shape. The peeling paint and wood grain provide a gritty, tactile quality that contrasts with the digital smoothness of the distortion.
- **The Warning:** Tucked into the lower-left quadrant of the "sphere" is the namesake sign. It reads:

**BEWARE! Poker Playing & Loose Women
are permitted in this establishment.**

- The vintage typography suggests a mid-20th-century tongue-in-cheek bar sign, grounding the surreal image in a specific cultural kitsch.
- **Organic Elements:** Long, delicate stalks of flowers and wheat-like plants frame the sphere. These elements are rendered with a ghostly clarity, their vertical lines breaking up the aggressive curvature of the background.
- **The "Vortex" Effect:** The edges of the image stretch toward the corners in a radial blur, creating a sense of motion or a "pull" that keeps the viewer's eye trapped within the center of the orb.

MC's work is an exploration of layered nostalgia. By taking a rugged, masculine "saloon" trope and encasing it in a fragile, bubble-like distortion, the artist creates a tension between the "tough" subject matter and the delicate presentation.

Strengths:

- **Textural Contrast:** The artist successfully balances the "hard" textures of the decaying wood with the "soft" textures of the flora.
- **Composition:** The use of the sphere creates a self-contained universe. It suggests that the world of "poker and loose women" is perhaps a memory or a dream, isolated from the rest of reality.
- **Tone:** There is a delightful bit of wit here. The "warning" is clearly a joke, yet the dark, moody black-and-white edit gives it a mock-serious, film-noir atmosphere.

The Viewer's Experience:

Looking at this image feels like peering into a **time capsule** that has been physically warped by time. The viewer might feel a sense of voyeurism—as if they are looking through a keyhole into a space where they aren't supposed to be, only to find a humorous, outdated warning waiting for them.

The power of *Beware of Loose Women* lies in its intentional friction. The piece functions as a visual tug-of-war between the gritty, masculine tropes of the past and a delicate, almost ethereal digital presentation.

Ultimately, the elements play off each other to create a distorted memory. The piece suggests that the "wild" past is a self-contained world we can look at, but no longer enter. The flora acts as a screen through which we view this history—beautiful, silent, and just out of reach.



ROAD LESS TRAVELED

This digital painting by MC entitled *Road Less Traveled (2019)*, invites a contemplative and slightly melancholic interpretation. The grayscale palette strips away the distractions of color, forcing the viewer to focus on texture, light, and the symbolic weight of the elements.

Transition

The most striking element is the V-formation of birds flying toward the upper left. This is a universal symbol of migration and seasonal change. For the viewer, this often represents:

- **The passage of time:** A reminder that nothing stays still.
- **Purposeful movement:** Unlike the static landscape below, the birds have a clear destination, suggesting a journey of necessity or instinct.

Barriers and Boundaries

The wire fence cutting across the mid-ground serves as a powerful metaphor.

- **Human vs. Nature:** The fence represents a human attempt to divide or claim the land, yet it looks weathered and fragile against the vast, sweeping brushstrokes of the sky.
- **Observation:** One bird (perhaps an owl or hawk) sits perched on a fence post, looking back toward the viewer. This creates a sense of being watched, or perhaps a feeling of being "stuck" on one side of a boundary while others fly free.



Escape

In **Escape (2019)**, MC invites the viewer into a surreal, monochrome landscape that feels less like a physical place and more like a captured thought. It is a digital painting that prioritizes atmosphere over literal representation, offering a meditative experience.

The composition uses soft, blurred textures and a high-contrast black-and-white palette to create a "dream-state."

The "characters" of this piece are the three distinct floral structures. They appear as delicate anomalies in a vast, swirling environment.

Because the piece is titled *Escape*, the viewer is prompted to ask: *Escape from what, or to where?*

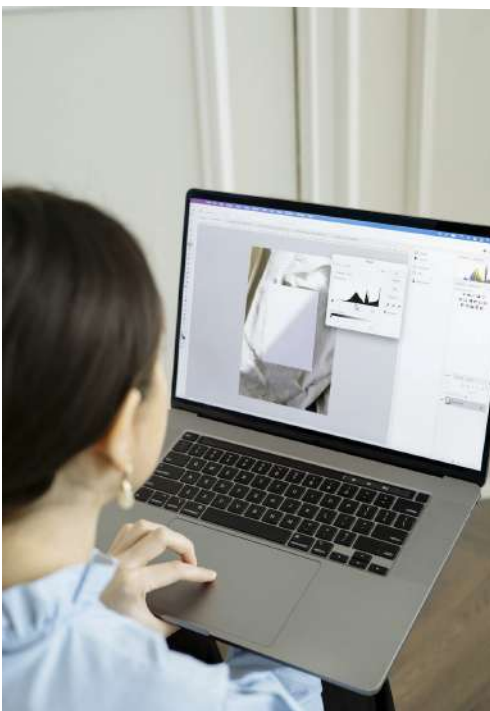
Viewing *Escape* is an exercise in quietude. It offers the viewer a moment to step out of a structured, colorful reality and into a fluid, mysterious space where the only logic is the interplay of light and shadow.

The inviting nature of *Escape* lies in its ability to act as a visual "breathing room." In a world saturated with high-definition, high-velocity data, this piece offers a sanctuary of ambiguity and soft focus.

Unlike realistic landscapes that demand a specific recognition of place, "Escape" invites the viewer to project their own narrative onto the canvas. Because the environment is semi-abstract—half-waterfall, half-digital glitch—it doesn't dictate how you should feel. Instead, it creates a "hollow" space that the viewer's own imagination can inhabit.

The use of digital technology to achieve a desired artwork or photograph

Adobe Photoshop transforms a computer into a high-end art studio by simulating the physical properties of paint, paper, and light. While it began as a photo editor, its Brush Engine and Layer System have made it the industry standard for digital concept art and illustration.



Transforming a raw photograph into a "piece of art" is less about fixing a picture and more about using the camera's output as a canvas. Photoshop serves as the bridge between reality and imagination, offering a suite of tools that allow a creator to manipulate light, texture, and composition to evoke a specific emotional response.

1. Mastering Light and Depth

The first step in elevating a photo is moving beyond the "flat" look of a standard digital file. Using **Adjustment Layers**, an artist can manipulate the tonal range to guide the viewer's eye.

- **Curves and Levels:** These aren't just for brightness; they are used to "sculpt" the subject, adding dramatic shadows (Chiaroscuro effect) or ethereal highlights.
-
- **Dodge and Burn:** This classic darkroom technique is used digitally to paint light and shadow manually, adding a three-dimensional, painterly quality to faces or landscapes.

2. Color Grading as Emotion

In art, color conveys mood. Photoshop allows for "color grading"—the process of altering the color palette to create a cohesive atmosphere.

- **Color Balance & Selective Color:** These tools allow an artist to shift highlights toward warm golds and shadows toward cool teals, creating a cinematic or "fine art" aesthetic that looks nothing like the original scene.
- **Gradient Maps:** By mapping specific colors to different brightness levels, you can transform a simple portrait into a monochromatic masterpiece or a vibrant pop-art piece.

3. Texture and Digital Brushwork

To move away from the "plastic" smoothness of digital sensors, artists often introduce organic elements.

- **Texture Overlays:** By layering scans of old paper, canvas, or film grain using **Blending Modes** (like Overlay or Soft Light), the image takes on a physical, tactile presence.
- **The Mixer Brush:** This allows the user to literally "smudge" pixels as if they were wet paint, softening edges and creating brushstroke patterns that mimic traditional oils or watercolors.

4. Compositing and Surrealism

Perhaps the most powerful "artistic" use of Photoshop is **Compositing**—combining multiple images into one. This breaks the boundaries of physics.

- **Masking:** Precise masking allows an artist to place a subject in an impossible environment, such as a forest floor inside a lightbulb.
- **Perspective Warp:** This ensures that disparate elements share the same vanishing point, making the surreal look believable.

5. Final Stylization

The final "artistic" touch often involves sharpening specific details while blurring others to create a "shallow depth of field" that the camera might have missed. This focuses the viewer's attention solely on the "soul" of the piece, whether that is the glint in an eye or the texture of a flower petal.

While many people view Photoshop as a photo editor, digital painters treat it as a limitless studio filled with infinite canvases and pigments. Hand-drawing a digital painting in Photoshop isn't about using filters; it's about using a stylus (like a Wacom or iPad) to replicate—and then exceed—traditional mediums like oil, charcoal, or acrylic.

1. The Digital Underdrawing

Just like a traditional painting, the process begins with a "sketch layer."

- **The Brush Engine:** Artists use the **Brush Tool (B)** with "Pressure Sensitivity" toggled on. This allows the thickness and opacity of a line to change based on how hard you press the pen, mimicking a real pencil.
- **Layer Opacity:** Once the sketch is finished, the artist lowers the layer's opacity to about 20%, creating a faint "ghost" image to paint over.

2. Blocking in Shapes and Values

Before adding detail, the artist "blocks in" the core colors and shadows.

- **The Lasso Tool:** To keep edges crisp, an artist might use the Lasso tool to "cut out" a shape and fill it with a base color.
- **Values First:** Many professionals paint in grayscale first to ensure the lighting (values) is correct before adding color. This ensures the "bones" of the painting are solid.

3. The "Painterly" Feel: The Mixer Brush

This is where Photoshop stops feeling like a computer program and starts feeling like an easel.

- **Mixing Pigment:** The **Mixer Brush** allows you to pick up multiple colors at once and "smear" them together on the canvas.
- **Wet vs. Dry:** You can adjust settings like "Wetness" and "Load" to determine how much the colors blend. High wetness creates a watercolor effect, while low wetness feels like thick, dry oil paint.

4. Sculpting with Layers and Clipping Masks

One of the greatest advantages of digital painting is the ability to paint "inside the lines" without effort.

- **Clipping Masks:** An artist can create a new layer clipped to the base shape. This allows them to paint textures and highlights freely; any stroke that goes outside the base shape simply disappears.
- **Blending Modes:** To add a glow or a deep shadow, artists use **Overlay** or **Multiply** modes, which allow "light" to sit on top of the digital paint naturally.



5. Refining and Detailing

The final stage involves "zooming in" to render fine details—the glint in an eye, the texture of fabric, or individual strands of hair.

- **Custom Brushes:** Artists often switch to brushes that mimic specific textures, such as a "Spatter" brush for skin pores or a "Grass" brush for landscapes.
- **The Smudge Tool:** Set to a low strength with a textured nib, this is used to hand-blend transitions between colors for a soft, realistic finish.

